

52, - 11 - 4

Ex. 2

DET KONGELIGE BIBLIOTEK

DA 1.-2.S 52 4°



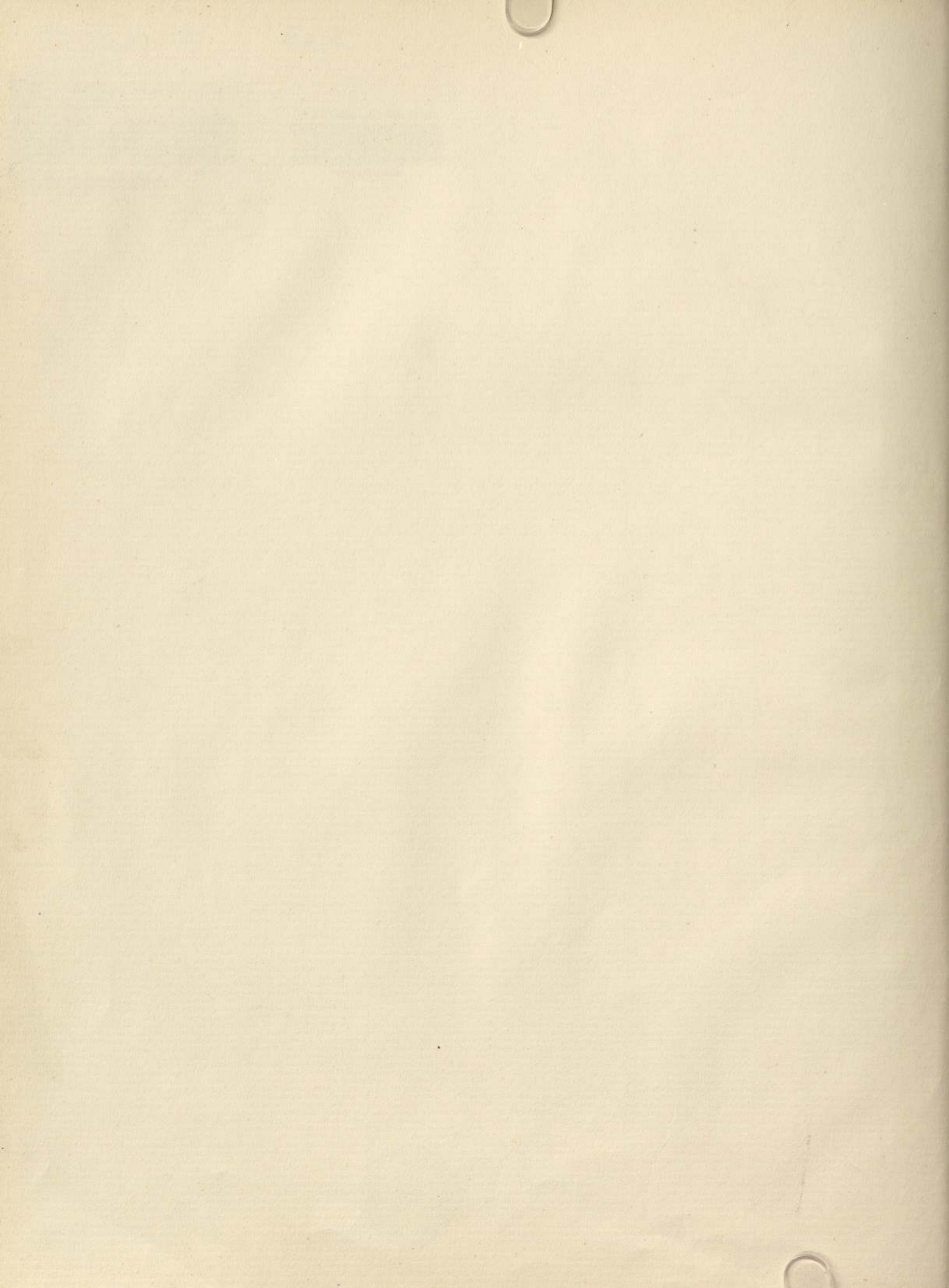
1 1 52 0 4 00037 9

DET KONGELIGE BIBLIOTEK



130022888308

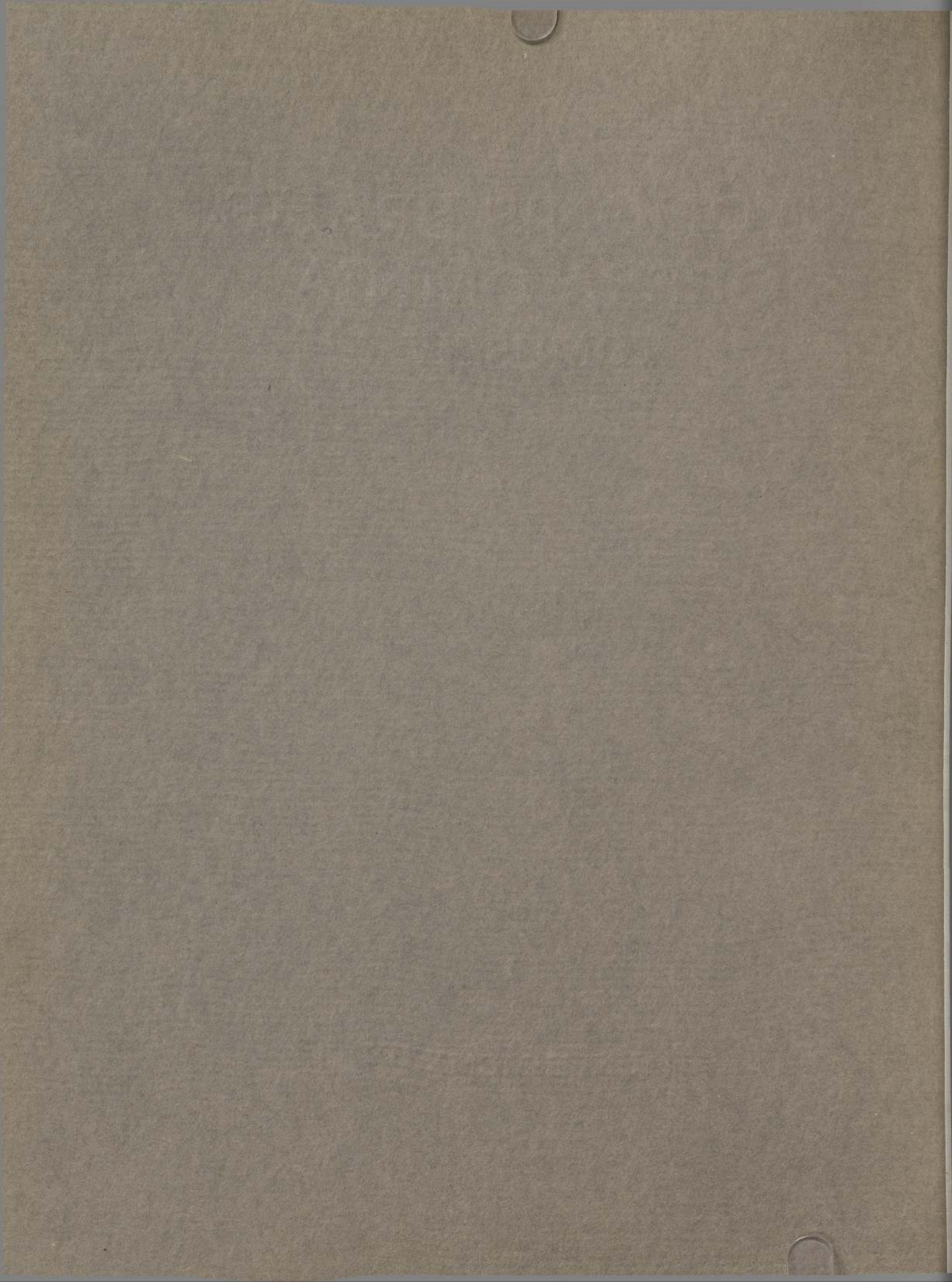




TYCHONIS BRAHE
OPERA OMNIA
TOMUS XV

HAUNIÆ MCMXXIX

1929 2608



TYCHONIS BRAHE DANI
OPERA OMNIA

//

AUSPICIIS SOCIETATIS LINGUÆ ET LITTERARUM DANICARUM
(DET DANSKE SPROG- OG LITTERATUR-SELSKAB)



TYCHONIS BRAHE DANI
OPERA OMNIA

EDIDIT

I. L. E. DREYER

TOMUS XV



HAUNIÆ MCMXXIX
IN LIBRARIA GYLDENDALIANA
TYPIS NIELSEN & LYDICHE (AXEL SIMMELKJÆR)

TYCHOONIS BRAHE DANICI
OPERA OMNIA

TOMI
T. L. E. DREYER
TOMUS XV



IN BIBLIOTHECA REGIA
HABNIENSIS



INDEX HOMINUM ET RERUM

CONFECERUNT

I. L. E. DREYER ET IOANNES RÆDER

PRÆMISSA EST CARMINUM APPENDIX

SUMPTUS FECERUNT INSTITUTUM CARLSBERGICUM
ET INSTITUTUM RASK-CÆRSTEDIANUM

HAUNIÆ MCMXXIX
IN LIBRARIA GYLDENDALIANA
TYPIS NIELSEN & LYDICHE (AXEL SIMMELKIÆR)

INDEX HOMINUM ET RERUM

AD HOC INDEXEM ET RERUM ET HOMINUM
PREPARATA EST TABULA ALPHABETICA
CONTINENS NOMINA OMNIUM PERSONARUM
ET RERUM QUAE IN HOC LIBRO OCCURRUNT



PRÆFATIO SOCIETATIS LINGUÆ ET LITTERARUM DANICARUM.

ULTIMUM TYCHONIS BRAHE *Operum omnium* tomum emittentes ea, quam ab initio promisimus, bibliographia et iconographia sine damno supersederi posse nobis visum esse profitemur. Hæc enim nunc minus desiderari videtur, cum in bibliographia Danica, quam confecit H. EHRENCRON-MUELLER, Regiæ Bibliothecæ Hauniensis bibliothecarius (*Forfatterlexikon omfattende Danmark, Norge og Island indtil 1814* II. 1925. p. 15 sqq.), libri, quos scripsit Tycho, et qui de ipso scripti sunt, copiose enumerentur.

Index hominum et rerum, quem præbet hic tomus, ita confectus est, ut ad tomos I—III et partem tomi IV locos, qui in illum recipiendi erant, exscripserit I. L. E. DREYER; reliqua exscripsit totumque in ordinem redegit IOANNES RÆDER. Ceterum monendum est *Astronomiæ instauratæ Progymnasmatum* libri primi indicem rerum a Keplero confectum in tom. III p. 324 sqq., indicem locupletiores virorum doctorum, quorum in epistolis mentio fit, in tom. VIII p. 452 sqq., indicem hominum inter mutationes aeris commemoratorum in tom. IX p. 344 sqq. reperiri. Hujus indicis paginas in eo, quem nunc edimus, indice satis habuimus afferre, cum inutile nobis visum sit omnes locos libri de mutationibus aeris, ubi hominis alicujus mentio fit, iterum indicare.

Editione operum Tychonis omnium ad finem tandem perducta, virum excellentissimum G. A. HAGEMANNUM grata mente recordamur, qui dono suo amplissimo effecit, ut scripta Tychonis astronomica edi possent. Rogamus deinde magna illa Instituta, CARLSBERGICUM et RASK-ÆRSTEDIANUM, quorum illud ad observationes edendas, hoc ad epistolarum astronomicarum et scriptorum variorum atque epistolarum actorumque editionem perficiendam sumptus fecit munificentissime, ut gratias nostras sinceras accipere dignentur. Animo tamen gratissimo ad illum virum respicimus, qui monumentum hoc, quod decori esset magno astronomo Dano, primus erigere instituit et ad ultimum suum diem ei perficiendo omnibus viribus operam dabat, I. L. E. DREYERUM.

HAUNIÆ, MENSE OCTOBRI ANNI MCMXXIX.

PREMIUM SOCIETY'S LANGUAGE ET LITERATURE

THE YEAR

This year the Society has been very successful in its work. The number of members has increased and the quality of the work has improved. The Society has been very fortunate in having a very successful year.

The first part of the year was very busy for the Society. We had a number of meetings and a very successful year.

The second part of the year was very busy for the Society. We had a number of meetings and a very successful year.

The third part of the year was very busy for the Society. We had a number of meetings and a very successful year.

THE YEAR

CARMINUM APPENDIX

CARMINUM APPENDIX



[Ex epitaphio templi Wäsby Scaniæ et S. Bringii *Monumentis Scanensibus* (Lund. Goth. 1748)
p. 234 sq.]

MEMORIÆ S.

5 **C**LAUDIUS hic parva tranquillus clauditur arca,
Cui vivo in toto non foret orbe quies.
Hunc natura semel terris monstravit et illic
Concebit saltem sex superesse dies,
Ut tener et levior mortali labe solutus
10 Ad superos nullo pondere tardus eat;
Tempora pro modicis ubi nunc æterna diebus
Possidet et placida pace potitus ovat.
Obijt Anno Domini MDLXXVII Januarij die VIII,
Natus eiusdem die II.
Nascentes morimur
15 et
Morientes renascimur.

Claudio dilecto filiolo naturali ob festinum hinc
in æternitatem discessum sibi non viso

20 TYCHO BRAHE
F. & P.

[E codice Hauniensi coll. Thott. 1044 in 4^o]

25 **ET GENERIS ET INGENIJ NOBILITATE JUVENI**
CLARO ERICO LANGE, DN. DE ERIGSTHOLM,
PRÆSIDI ARCIS BYGHOLMENSIS, AMICO
SUO INTEGERRIMO.

S. D.

30 **H**ANC tibi Tycho tuus transmittit Ericæ salutem,
Si queat ulla salus esse, ubi regnat amor.
Omnis amans animo langvet, nec corpore firmo est;
Est res plena adeo debilitatis amor.
Nunquam secum habitans, alieno in corpore vivit
Is, quem solliciti tangit amoris amor.
Invidet alternam requiem placidumque soporem,
35 Dum vigilat pernox irrequietus amor.
Musarumque choras, pulcher quos ducit Apollo,
Et superum laudes non bene novit amor.
Nec secreta capit Vestalibus abdita sacris,
Quamvis igne magis ferveat omnis amor.

Lucidaque

Lucidaqve astra poli, sublimia templa Deorum,
 Nec bene utroque videt lumine captus amor.
 Sic nunquam reditura iterum juvenilia perdit
 Tempora, dum nimium tempora torquet amor.
 Sic frustrare solet properantis commoda vitæ,
 Dum vivo quid sit vivere nescit amor. 5
 Hæc et mille alias cum secum incommoda portet,
 Quamvis nulla queat cernere cæcus amor,
 Cur flagrante volens furtim te conficis igne?
 Cur tibi tam charus non sat amicus amor? 10
 Define perpetuo sentire Cupidinis arcus,
 Define, nec constans pectora lædat amor.
 Et si nocte velis, quis sit modus, unde licebit
 Evitare ictus, quos jaculatur amor,
 Accipe, sed caveas, ne nominis implicet error;
 Fac novus alterius sit medicamen amor. 15
 Sic te blanda Venus per tela Cupidinis urget,
 Palladis egregius substituat amor.
 Si nocturna quies nimium frustratur amore,
 Urania astriferæ sit tibi noctis amor. 20
 Sive Cupidinea te nox quoque conficit igne,
 Sit tibi Vestarum lucidus ignis amor.
 Denique quicquid erit, leviter quod necit amorem,
 Et gravis et melior fac cito pellat amor.
 Sic amor alterius fiet medicamen amoris: 25
 Omnia qui vincit, se quoque vincat amor.
 Tu modo, si dubitas, notam te confer ad arcem
 Urania, invetus hic tibi crescit amor.
 Crescet, et alterius fervor decrescet Amoris;
 Hic in amore potes discere quid sit amor. 30
 Seu juvet Æthereas mundi specularier arces,
 Ætheris intrabit pectora mirus amor:
 Seu magis igniferas placeat scrutarier artes,
 Magnus in igne aderit, cum fiet ignis, amor.
 Musarumque choros dulces et Apollinis arces, 35
 Quas Charites redamant, numne repellat amor?
 Singula quid referam? Veri penetralia amoris
 Quando subire datur, vanus abibit amor.
 Hæc tibi Tychonis, quo te multumque diuque
 Prosequitur, charus scribere jubet amor. 40
 Nec scripsisse satis fuerat, nisi preba veniret
 Littera, suppressus quâ vetus iret amor.

Preßis ille tuo residens in corde lituris
 Scilicet est preßis obliterandus amor.
 Vt novus et melior, qui te revocetqve juvetqve,
 Impreßus menti restituatur amor.
 5 Imprimere Uraniaë Musæ, Vulcanus, Apollo
 Qvem poterint, vanus quando peribit amor?
 Id si noster amor, si typi et littera preßa
 Expedient, aderit mox tibi quantus amor?
 10 Magnus is est, fateor, quo nunc torqveris amore,
 Parvus erit, veniet cum tibi verus amor.
 Nec frustra hunc veteres parvum finxere Poëtæ,
 Cum neque sit magnus sit neque fixus amor.
 Sydera nec vincit penetrat nec viscera terræ,
 Sed perit in minimis iste pusillus amor.
 15 Verior et major typis tua pectora nostris
 Musa omnes superos orat ut intret amor.
 Sin minus et solidum nunc aspernaris amorem,
 Forte olim dices: sicne fefellit amor?
 20 Sicne fefellit amor? bona sic mihi tempora ademit?
 Tunc etiam nolles, iste fuisset amor.
 Sed cave ne sero nimium, cum occasio calva
 Aufugiet, pectus serior intret amor;
 Pœnitet hunc frustra, quem sero pœnitet, et cum
 25 Nulla salus restat, stat quoque nullus amor.
 Nunc igitur vigor ingenij et tibi firma juvenus
 Cum fiet, abvetus fac valedicat amor.
 Infvetus subeat, validum qui corpore, mente,
 Artibus, ingenio te tibi reddat amor.
 30 Utque valere queas, quod amoris liber et igne
 Efficies, dicit nunc vale firmus amor.

EPILOGUS.

Si non vis solidum, stolidum secteris amorem,
 In stolido solidi furget amoris AMOR.

Datum Vraniburgi

Anno 1584, 9 Calend. Decembr.

T.

TYCHO BRAHE.

ANNOTATIONES

ANNOTATIONES EDITORIS.

CUM epitaphio Claudio filio Tychonis consecrato, quod in Tychonis carminibus edendis nos latuit, conferri potest alterum Kirstinæ filiae consecratum (tom. IX p. 174 sq.).

Carmen Erico Lange scriptum ante annos paucos in codice Hauniensi coll. Thott. 1044 in 4^o invenit C. Behrend, bibliothecarius Regiæ Bibliothecæ Hauniensis. Scriptus est hic codex a. 1640 sqq., inscribitur autem *Gemmulæ selectiores per Achillem Andream Toxotium* (i. e. Skytte). Inter varii generis annotationes et commentarios continet carmen, quod nunc primum editur. Sicut alia carmina Tychonis, quæ edidimus in tom. IX pp. 176—177 et 179—190, hoc quoque in ipsius typographia descriptum esse videtur, sed omnia exempla typis descripta perierunt. Designat ipse in carmine Jacobo Ulfeldio scripto (tom. IX p. 179, 9). De Erico Lange, amico Tychonis, qui Sophiam sororem ejus postea in matrimonium duxit, conferatur carmen *Urania Titani* (tom. IX p. 193 sqq.) cum annotationibus nostris. Ceterum dubitari potest, hujusne amore jam a. 1584 captus fuerit.

ad p. 3,²²] *GENERIS* scripsimus collatis locis tom. VIII p. 3,²⁹, p. 8,²⁶, p. 10,¹², p. 77,^{29—30}, tom. IX p. 179,²: *GENIJ* cod.

ad p. 3,³⁵] *choros* correctum est in cod. (*e cohors?*).

ad p. 4,¹³] supra *velis* in cod. scriptum est *cupis*, et in margine addita sunt verba *noscere si cupias*.

ad p. 4,²¹] supra *conficit* in cod. scriptum est *concoqvit*.

ad p. 4,²⁸] supra *hic* in cod. scriptum est *fic*.

ad p. 5,¹⁶] *ut* Behrend: *et* cod.

INDEX HOMINUM ET RERUM

INDEX HOMINUM ET RERUM

INDEX HOMINUM ET RERUM

- Aalburgensis*, Johannes, VI 117, VIII 90, 181, 452, IX 344; epistola Tycho-
nis ad eum VII 3.
- Abraham* I 147 sq., VIII 411 sq.
- Abu'l Wefa* de Lunæ inæqualitate
I LII.
- Accuratio* observandi Tychonis
I xxvi sqq.
- Adam* I 148, II 257, 314, III 230, V 5,
VIII 411.
- Adolphus Fridericus*, dux Meckel-
burgensis, XIV 116, 136.
- Ægyptii* I 145, 147 sq.; de anno si-
dereo II 34, pyramides III 147, V 5.
- Æquatio* temporis II 97, 445, tabula
II 97.
- Æquatoria* VI 88, 353 sq., VII 126.
- Æquinoclia*, eorum observationes
I L, II 15, 58, VIII 32 sq.; cf. Sol.
- Aer*, elevatio ejus supra Terram II 80,
III 154 sq., 248, VII 172, lux stellæ per
ejus vapores aucta non fuit III 248.
- Æschylus*, Hippocratis Chii discipu-
lus, de cometarum caudis IV 136.
- Ætheris* natura II 77, sententia quo-
rundam, totum cælum nihil aliud
esse quam aerem continuum III 155,
VI 88, 135, ætheris atque aeris diffe-
rentia VI 93, 136, 166 sqq., 194 sqq.,
VII 230, Rothmanni sententia de
æthere VI 111, 149 sqq.
- Æthiopes* astronomiæ addicti fu-
erunt II 313 sq., III 230.
- Aggershusiæ* poli altitudo V 309, 342.
- Agricola*, Caspar, musicus, VIII 404,
414.
- Agrigenti* latitudo et longitudo V 311.
- Agripus* vid. Agrippa.
- Agrippa*, Cornelius, lucidiorem Pleia-
dum observavit II 246, duos plane-
tas ultra reliquos septem esse opi-
natur III 114, 116, 122, 127.
- Ahmed Ibn Abdallah* I xxi.
- Ahusiæ* poli altitudo V 304, 309, longi-
tudo V 309.
- Albæ Regalis* latitudo et longitudo
V 311.
- Albategnius* I vi, xxi, 149, V 5, 173, 175,
VIII 102, 386; de Solis apogæo et ec-
centricitate II 18, 28, de anno tropico
II 33, 443, de anno sidereo II 444, de
Lunæ latitudine maxima II 121, de
præcessionem II 254, III 336, de di-
stantiis stellarum a Terra II 461,
veras magnitudines planetarum et
stellarum fixarum determinavit II
416 sqq., loca stellarum definivit
II 246, III 336, catalogus ejus stella-
rum II 151 sqq., 281, VIII 152, co-
metam in sphæra Veneris posuit I
27 sq. (rectius Albumasar III 105,
396).
- Albertus*, dux Austriæ, VIII 407.
- Albertus*, legatus Holsatiæ, IX 344.
- Albertus a Conttenau* VII 358.
- Albertus Magnus* VI 146.
- Albinovanus*, poeta Romanus, de
eclipsi Veneris VIII 157 sq., 351, 448,
452.
- Albinus*, Nicolaus, VIII 110, 113.
- Albumasar*, III 158; cometam in
sphæra Veneris se vidisse existimat
III 105, 111, 296, 396, IV 327.
- Alburgi* poli altitudo V 304, 309, lon-
gitudo V 309.
- Alces*, animal, VI 230 sqq., 235, 238,
240 sq., 243 sq., 246 sqq., 296, 300,
302 sqq., 337 sqq., 370.
- Alchemia* vid. Spagyrica ars.
- Al Chogandi* ingentem sextantem
construxit I xxii sq.
- Alcmarii* latitudo et longitudo V 311.
- Aldebora* prope Lunam observatus
XI 142 sqq., eclipsis ejus X 23, locus
ejus VI 77, 86, 117.
- Aldenburgi* latitudo et longitudo V
311.
- Alemann*, Casparus, VIII 371.
- Alexandriæ* poli altitudo V 131 sq.,
310, 311, longitudo V 310, 311; cf. VII
286 sq., 298.
- Alfeld*, Balthasar, VIII 18.
- Alfraganus* I vi, VIII 386; de distantiiis
stellarum a Terra II 461, veras mag-

- nituidines planetarum et stellarum fixarum determinavit II 416 sqq.
Alhazen I xxviii, 146, de vaporum elevatione maxima II 80, de refractione II 76, III 246, IV 42, 152, VI 92 sq., 112, 121.
Almagestum vid. Ptolemæus.
Almanac vid. Diarium.
Alpetragus III 116.
Alphonsus X, rex Castiliæ, I vi, xvi, 149, V 5, 173, 175 sq., IX 150; theoria trepidationis I XLVII, de Lunæ latitudine II 121, catalogus stellarum II 151, III 337, comparatio locorum duodecim stellarum cum locis Tychonis III 386 sq.
Alsagani I xxiii.
Alsdorffii latitudo et longitudo V 310.
Ambergæ latitudo et longitudo V 311.
Ambrosius, doctor, VII 15, 84.
Amos, propheta, de stellarum nominibus II 256.
Amsterodami latitudo et longitudo V 310, 311.
Amurathes, Turcarum imperator, VII 17 sq.
Anaxagoras de cometis III 86, IV 382.
Anconæ poli altitudo V 311, VII 298, longitudo V 311.
Andreas, servus Tychonis, VII 10, alter(?) VIII 133, 327, 369 sq., IX 344.
Andreas Christiani, rector universitatis Hafniensis, XIV 56, 77.
Andreas Jacobi et *Andreas Viburgensis*, discipuli Tychonis, IX 344, X 121, XIV 44.
Andromeda II 313 sq.
Anfelt, Claudius, IX 344.
Angelus, Jacobus, VIII 393, 452.
Angelus (Anglus), Johannes, III 159, 164, 397, VIII 393, 452.
Annæburgi latitudo et longitudo V 311.
Annulus astronomicus V 6, 98, VI 260, 286, VII 18.
Annus sidereus ab Albategnio, Thebitio, Copernico definitus II 34, 444, VIII 103, a Tychone II 37.
Annus tropicus a Tychone definitus I LI, II 15, 32, 43, VIII 85, 198, 431, 435.
- Anonymus Germanus* de nova stella III 262—263.
Antiscia I 42, 191, 314.
Antonius IX 344.
Antverpiæ poli altitudo III 76, V 310, 311, longitudo IV 519, V 310, 311.
Aphetæ I 192, 314; vid. Hylech.
Apollonius Myndius III 266.
Apollonius Pergæus I v, XLII, VIII 352 sqq.
Apologetica responsio ad J. Craigum IV 417—476, VI 318 sq., Craigo missa VII 195, Hagecio missa VII 216, 222 sqq., additamenta ad eam IX 151—157.
Appianus, Petrus, III 157, 397, V 53, VIII 452; cometas observavit II 379, 457, IV 137, 356 sqq., VII 120, 147, 212, 215, 251, 270, 370, caudas cometarum a Sole aversas esse docuit I 12, III 165, 398, IV 137 sq., 150 sq., 208.
Appianus, Philippus, epistola ejus de nova stella III 157—161, VII 13, recensita a Tychone 161—167.
Aquæ cælestes VII 231 sqq.
Aratus de fabula Cassiopeæ II 314 sq. de Lyra IV 49.
Arbutnot observationes Tychonis edere instituit X viii sq.
Archæus naturalis III 307, terrestres IV 329, 479, VII 202.
Archimedes de radii origine I ix, 146, Arenarius VII 164.
Architectura I 146.
Arcus bipartitus I xxiii, V 68—71, VI 36, 253, 265. Cf. Sextantes.
Argentinae latitudo et longitudo V 309, 311.
Arhusiæ poli altitudo V 304, 309, 311, longitudo V 309, 311.
Arietis lucida, ascensio recta ejus per Venerem inventa II 160 sqq., 197, III 339, IV 35, V 113, locus ejus VI 86.
Arimini latitudo et longitudo V 311.
Aristarchus Samius I vi, VIII 173 sq.; rationem distantiarum Solis et Lunæ definivit I xxx, systema mundi I xxxvi, XLII, II 14, IV 156, VI 186, VII 199.

- Aristoteles* I XII, 167, II 330, III 153, VII 176 sq., 257, 270, IX 154; de mundo I xxxvi, cælum e solida diaphanitate constare docuit II 76, VII 134 sq., 230, nulla nova corpora cælum recipere docuit II 320, III 90 sq., de natura galaxiæ III 305 sqq., aerem supremum circummagi docuit II 378, de stellarum circumvolutione et scintillatione II 457, planetas quosdam crinem aliquando nancisci ait VI 173, de natura cometarum I xxxiv, II 320, 372 sq., III 26, 122, 133 sq., 141, 227, 246, 261, 264 sq., 306, IV 7, 83, 135, 137 sq., 151, 382, 401, 419 sqq., 449, 471, VI 17, ejus opinio a Tychohe juvene accepta I 27, III 105, IV 418, Tychohis judicium de eo IV 472, VI 323, VII 309.
- Arithmetica* I 145 sqq., V 5.
- Arivabenus*, Lælius, VIII 400.
- Armillæ* VII 15, 18 sqq., Ptolemæi et Arabum I xviii, II 151 sq., V 6, 53, VI 282, Tychohis I xix, II 152, armillæ ejus æquatoriæ V 56—59, VI 254, 267, aliæ II 152, 250 sqq., V 60—63, 318, VI 37, 43, 252, 264, maximæ II 79, V 64—67, VI 37 (rectificatæ XII 182 sq.), zodiacales V 52—55, VI 251, 263 sq., aliæ VI 259 sq., 281 sq., armilla portatilis V 98 sq., VI 260, 283, armillare instrumentum V 100, VI 257, 276.
- Arnoldus* de Villa nova VI 146.
- Arscenius*, Gualterus, radium construxit V 97, VI 285, annulum VI 286.
- Arzachel* (Al Zarchali) de apogæo et eccentricitate Solis II 29.
- Asa*, rex Judæorum, I 163.
- Ascensio recta* lucidæ Arietis per Venerem definita I XLIV, II 159—197, tabula ad singulos gradus Eclipticæ II 72 sqq., 86 sqq., ascensiones rectæ stellarum præcipuarum inventæ II 198 sqq., 284—286, III 375—377.
- Aslacus*, Conradus, VI 230, 366, VII 373, VIII 454, IX 344, epistola ejus ad Tychonem VII 366—368, epistola Tychohis ad eum VII 377.
- Astrolabon* I xviii, V 6, 99, VI 261, 286.
- Astrologia*, origo ejus I XIII sq., fines ejus I xv, opiniones Tychohis de ea I xv, 35 sqq., 152—173, 183, 208, 250, 261 sq., III 223, 309, IV 237 sq., V 117, VI 142, VII 41, 116 sqq., 137 sq., VIII 240 sq., Tychohis Astrologia meteorologica I 177—178, aliorum tractatus de astrologia I 314, III 224, Rantzovius de astrologia VI 29, Wolfius de astrologia VII 16 sq.; vid. Bodinus, Horoscopi, Leovitius, Sixtus.
- Astrologicum judicium* de nova stella I 30—34, III 309—319, de eclipsi lunari anni 1573, I 58—64, 132—140, de cometa anni 1577 IV 389 sqq., de cometa anni 1585 IV 402 sqq., 409 sqq.
- Astronomia*, origo et progressus ejus I 145 sqq., VIII 411 sqq., utilitas I 151 sq.
- Astronomiæ instauratæ mechanica* I L, V 3—162, numerus exemplorum V 317, Rantzovio missa VIII 64, 66, Ferdinando duci missa VIII 119, Magino missa VIII 123, Rudolpho imperatori donata VIII 166, 177, Melisso missa VIII 248, Mauritio landgravio missa VIII 388, Christiano IV regi missa XIV 134.
- Astronomiæ instauratæ progymnasmata* I xxxiv, quando composita I L, III 321, partes prima et secunda II 1—435, tertia III 1—299, progressus libri II 439 sq., III 320, VI 224, 228, 234, VII 332, VIII 183, 199 sq., 234 sq., numerus exemplorum II 441, editiones ibid., Blotio missa VII 329, Hagecio missa VII 332, Herwarto missa VIII 225.
- Astronomum* κοσμοπολίτης esse oportet V 27, VIII 100.
- Avenionis* latitudo et longitudo V 311.
- Augustæ Treverorum* latitudo et longitudo V 312.
- Augustæ Vindelicorum* poli altitudo II 348 sqq., V 309, 311, VI 141, VIII 346, longitudo V 309, 311.
- Augustinus* I xiv, VI 181, 186.
- Augustulus* VIII 417.

- Avienus*, Rufius Festus, de fabula Casiopeæ II 315.
- Auræ statum* ex astris dependere quidam opinabantur I XIII.
- Aureliæ* latitudo et longitudo V 310, 311.
- Aureum seculum* III 312.
- Aurifaber* (Crol), Johannes, VI 297, 371, 373, IX 344, X 231, 363, XIII 345, XIV 44; de parallaxi Veneris I xxxi, XII 60.
- Autolycus* VIII 173.
- Babylonis* latitudo et longitudo V 311.
- Babylonii* de anno sidereo II 34.
- Bacchati* vid. Bochazius.
- Bachendorf*, Nicolaus, XIV 171.
- Bacmeister*, Lucas, Rostochiensis, VIII 452, XIV 212 sqq., 230; epistolæ ejus ad Tychonem VIII 377—379, 404—405, epistolæ Tychonis ad eum VIII 286—288, 361—363, 389—390, 413—415, filii ejus VIII 405.
- Baco*, Rogerius, VI 146.
- Badenæ* latitudo et longitudo V 311.
- Bærenburgi* latitudo et longitudo V 311.
- Bago* XIV 123.
- Baldus*, Bernardinus, VIII 251, 394, 452.
- Balthazarus* VII 54.
- Bambergæ* latitudo et longitudo V 309, 311.
- Bangus*, Petrus, IX 194.
- Banner*, Ericus, VIII 214.
- Banner*, Franciscus, IX 344.
- Banner*, Gustavus, VIII 214, 378.
- Banner*, Steno, VIII 378.
- Barbyi* latitudo et longitudo V 311.
- Barcaloniæ* latitudo et longitudo V 310.
- Barleben*, Curtius, XIV 245 sq.
- Barnefeldius*, Johannes, VIII 82, 95, 98, 452.
- Bartholinus*, Erasmus, Tychonis Apologiam ad Craigum typis impressam se possedisse testatur IV 517, Tychonis observationes edere instituit X vi sqq.
- Bartholinus*, Magnus, VII 327, VIII 452, IX 346, XIV 71, 75 sqq., 177, 180.
- Barviti*, Johannes, imperatori a secretis II 10, VIII 96, 108, 120, 126 sqq., 131, 163 sqq., 178 sqq., 182, 188, 193 sqq., 232 sq., 340 sqq., 374, XIV 166 sq., 179 sq., 207, 212; epistolæ Tychonis ad eum 240—241 (?), 256—257 (?), 315—316, Tengnaglii præfatio ad eum IV 494—495.
- Basilea* V 108, VII 23, 25; latitudo et longitudo ejus V 309, 311.
- Battus*, Levinus, Rostochiensis, VII 3, 33, 82, 170, VIII 452.
- Bautzeni* latitudo et longitudo V 311.
- Bazeli*, Nicolaus, de cometa anni 1577 IV 362 sq.
- Beck*, Lago, judex, IX 192, 323, XIV 24, 64 sq.
- Belantius*, Lucius I 168.
- Belmers*, Luderus, VIII 219.
- Below*, Henricus, VIII 452, XIV 49; epistola ejus ad Ulricum ducem XIV 38—39, epistola Tychonis ad eum VII 116—119.
- Benachia* arx VIII 159, 168, 178, 188, 228, 234; poli altitudo ejus VIII 183, X xxvi, XIII 187—190, 235, longitudo X xxvi.
- Benedictus*, Johannes Baptista, de nova stella III 250—253, 403, de Luna a Veneris stella illuminata VI 172.
- Berbistorff*, Godefridus, epistola Tychonis ad eum XIV 203.
- Berdæ* latitudo et longitudo V 311.
- Berga*, Antonius, III 253.
- Bergæ* latitudo V 309, 342, longitudo V 309.
- Berlini* latitudo et longitudo V 309, 311.
- Bernæ* latitudo et longitudo V 309, 311.
- Bernhardus*, princeps Anhaltinus, VI 161, 180.
- Bernssön*, Johannes, VII 89, VIII 452.
- Beza*, Theodorus, epigramma de nova stella II 325 sq.
- Bjelke*, Steno, VIII 184 sq.
- Bjelke*, Turo, VIII 214, 378.
- Biermann*, Antonius, XIV 124.
- Bikkers*, Alexander, et uxor ejus Tibbeke VIII 220.

- Bild*, Nicolaus, epistola Tychonis ad eum XIV 36—37.
- Bild*, Preben, XIV 48, 49, 54.
- Bille* (Bilde), Ascanius, vid. Bille, Eschillus.
- Bille*, Beata, mater Tychonis, V 106, VII 31, 306, IX 344, XIV 3; epistola ejus ad Tychonem XIV 167, epistola Tychonis ad eam XIV 175—176.
- Bille*, Birgitta, IX 344.
- Bille*, Claudius, VIII 232, 238, 260, 452 sq., IX 344, XIV 182, 190.
- Bille*, Elisabetha, XIV 82, 190 sq.
- Bille*, Eschillus, VI 241 sqq., 246, VIII 12, 23, 60, 65 sqq., 78, 92 sq., 127, 212, IX 344, X 385, XIV 68, 76, 79, 169, 174, 176, 182 sq., 198, 200, 214, 219, 222, 226, 228, 231, 258; epistola ejus ad Tychonem XIV 160—163, ad Meyereum XIV 228—229, ad Stralendorfium XIV 229—230, epistolæ Tychonis ad eum XIV 185—189, 216—217.
- Bille*, Olaus, XIV 55, 57, 76, 161, 163.
- Bille*, Steno, avunculus Tychonis, I 65, II 307, III 93, VII 17, 27, 31, IX 344; epistola ejus ad Tychonem VII 45, litteræ regis ad Christinam viduam ejus XIV 52.
- Bille*, Steno, consobrinus Tychonis, IX 344.
- Bing*, Andreas, XIV 49.
- Blaev*, Guilielmus Janssoon, discipulus Tychonis, IX 344, stellam variabilem in Cygno invenit III 323, 407, globos cælestes confecit VI 347 sq., VIII 322, 453, eclipsin Lunæ anni 1598 observavit XIII 128—129.
- Blessius* VII 54.
- Blotius*, Hugo, bibliothecarius Viennensis, VIII 209, 453; epistolæ Tychonis ad eum VII 328—330, VIII 215—216.
- Bochazius* (Bacchatus), Martinus, V 228, 331, VIII 452; epistola Tychonis ad eum VIII 238—240.
- Bodinus*, Johannes, liber ejus de republica III 224, 401.
- Bøkelius*, Johannes, VIII 31, 35, 63, 76, 91 sq., 112, 115, 453, XIV 146 sq.
- Bølle*, Birgitta, epistola Tychonis ad eam XIV 31.
- Boetius*, Hector, Scoticarum rerum scriptor III 317.
- Bog*, N., IX 344.
- Bomell*, Envoldus, IX 344.
- Bonfilius*, Paulus, V 128.
- Bongarsius*, Jacobus, legatus Gallicus, VII 228, 238, VIII 453; epistolæ ejus ad Tychonem VII 383, VIII 153, 318, epistola Tychonis ad eum VIII 260.
- Bononiæ* latitudo et longitudo V 310, 311.
- Bopenhagen*, Johannes, VIII 387.
- Bordingus*, Jacobus, cancellarius Meckelburgensis, VII 122, 141, VIII 377, 404, 453, XIV 180; epistolæ ejus ad Tychonem VIII 5, XIV 212—213, epistolæ Tychonis ad eum VIII 36—37, XIV 193—194, 210—211, 214—215, 220.
- Borken*, Johannes, VIII 219.
- Borken*, Meimarus, VIII 219.
- Bradleius*, Jacobus, I xli.
- Brahe*, Anna, amita Tychonis, IX 344.
- Brahe*, Axillus, frater Tychonis, VIII 9, 66, 76, 79, 92 sq., IX 344, XIV 3, 102 sq.; epistola ejus ad Tychonem XIV 160.
- Brahe*, Canutus, frater Tychonis, VII 56, IX 344.
- Brahe*, Cecilia, filia Tychonis, IX 344, XIV 260, 262.
- Brahe*, Christina, filia Tychonis, IX 174—175.
- Brahe*, Christina, soror Tychonis, XIV 3.
- Brahe*, Claudius, filius Tychonis, XV 3.
- Brahe*, Elisabetha, filia Tychonis, uxor Tengnaglii, VIII 409, 413, IX 344, XIV 218, 221, 251, 260, 262, 267.
- Brahe*, Elisabetha, soror Tychonis, XIV 3.
- Brahe*, Ericus, filius Stenonis, epistola ejus ad Tychonem XIV 204—205.
- Brahe*, Falco, filius Axilli, XIV 205.
- Brahe*, Georgius, filius Stenonis, XIV 205.
- Brahe*, Georgius, filius Tychonis, IX

- 344, XIV 251 sq., 260, 262, 267 sq., 274; epistolæ ejus ad Keplerum XIV 285—287, 292—294, ad consilium Bohemicum XIV 301—302.
- Brahe*, Georgius, frater Tychonis, IX 344, XIV 3.
- Brahe*, Georgius, patruus Tychonis, V 106.
- Brahe*, Lago, patruelis Ottonis, VII 242.
- Brahe*, Magdalena, filia Tychonis, IX 344, XIV 82, 88 sqq., 260; epistola ejus ad Mettam Kotte XIV 152—153, ad Eschillum Bille XIV 247—251, ad Longomontanum XIV 261—263.
- Brahe*, Margareta, soror Tychonis, VIII 48, IX 344, XIV 3, 87, 182.
- Brahe*, Maria, soror Tychonis, XIV 3.
- Brahe*, Otto, filius Stenonis, VIII 70, XIV 176, 205.
- Brahe*, Otto, pater Tychonis, V 106, VII 3sq.; annotationes ejus de gente sua XIV 3.
- Brahe*, Petrus, sobrinus Tychonis, VIII 98 sq., 215, XIV 79; epistola Tychonis ad eum XIV 192.
- Brahe*, Sophia, filia Axilli, Rosenkrantzio nupsit VIII 9, 64, 66, 76, 79, 91 sq., 113 sq., 126, 135, 333.
- Brahe*, Sophia, filia Tychonis, IX 344, XIV 260, 262, 267.
- Brahe*, Sophia, soror Tychonis, I 131, VI 315, VII 242, 321, VIII 9 sq., 64, 66, 76, 170 sq., 277 sq., 369, 409, IX 323 sqq., 344, X 38, XIV 81 sqq., 90 sqq., 174, 197; epistola ejus ad Tychonem XIV 157—159, liberos Tychonis legitimos esse testatur XIV 299—300, epistola Tychonis ad eam XIV 178—182, carmen ejus nomine ad Ericum Lange scriptum IX 193—207, carmen a Tychone ad eam scriptum IX 208.
- Brahe*, Steno, frater Tychonis, VII 93, 109, 375, VIII 4, 6, IX 344, XIV 3, 49, 61, 68; epistola Tychonis ad eum XIV 176—177.
- Brahe*, Tycho, filius Tychonis, V 325, VII 372, VIII 70, 125, 130, 132, 134, 147, 166, 175, IX 344, XIV 175 sqq., 182, 184 sqq., 190, 251 sq., 260, 262, 267; Berlinum missus VIII 65, in Daniam missus VIII 179, 182, 192, 212, 238 sq., 241, XIV 152, Pragam missus VIII 245 sq., in Italiam missus VIII 309 sq., 394, 398, 410, 418, epistola ejus ad Eschillum Bille XIV 253—254, epigramma Tychonis ad eum IX 212.
- Brandenburgi* latitudo et longitudo V 309, 311.
- Bransisvigi* latitudo et longitudo V 311.
- Brasch*, Martinus, poeta, VIII 75, 110, 117, 249, 267, 453; epistolæ ejus ad Tychonem VIII 337—339, 379—380, 402, epistolæ Tychonis ad eum VIII 290—291, 357—360, 391, 410—413, epigramma Tychonis ad eum IX 208.
- Braun*, Georgius, Theatrum urbium V 149, 325 sq., VII 386 sq., VIII 453.
- Brechtalius* VII 42.
- Bredow*, Petrus, XIV 84.
- Bremæ* latitudo et longitudo V 309, 311.
- Brender*, Olaus, IX 344.
- Brensbergæ* latitudo et longitudo V 311.
- Brisachii* latitudo et longitudo V 311.
- Brockenhus*, Georgius, filius Othonis, VIII 18, IX 344, XIV 162, 188 sq.
- Brockenhus*, Otho, IX 344.
- Brucæus*, Henricus, VII 343, VIII 453; de inventionibus Tychonis I LVIII, de eclipsi Lunæ anni 1584 VI 100 sq., de mutata latitudine Lunæ VI 170, epistolæ ejus ad Tychonem VII 33—34, 43—44, 48—49, 85—86, 88—89, 91—92, 100—101, 114, 115, 141—144, 166—168, 345, epistolæ Tychonis ad eum VII 78—82, 147—164, 168—175, observationes eclipsis Lunæ anni 1584 X 313—314.
- Brugæ* latitudo et longitudo V 310.
- Brundusii* latitudo et longitudo V 311.
- Brunsvigæ* latitudo et longitudo V 309.
- Brusch* (Bruske), Carolus, VIII 74, XIV 75, 79 sq., 83, 89.

- Bruxellæ* latitudo et longitudo V 310, 311.
- Buch* (Buck), Johannes, discipulus Tychonis, IX 344, XIV 44.
- Buchanan*, Georgius, VII 331, 354 sq., VIII 453; de motu Terræ I xxxviii, VI 102, 355, effigies VI 255, 269, VII 283, epistola ejus ad Tychonem VII 21—22, 41, epigramma Tychonis ad eum VII 22.
- Buck*, Jacobus sive Joachimus, Lubecensis, VII 227, 243, 300, VIII 111, 113, XIV 188 sq., 196, 199; cf. Buch.
- Bucretius*, Daniel, Vratislaviensis, VIII 77, 266, 453; epistola Tychonis ad eum VIII 323—324.
- Bucretius*, Hermannus, VIII 77.
- Buergius*, Justus, mathematicus, VI 49, 52, 61, 179, 296 sqq., 301, 303, 346 sq., 361 sqq., 370 sqq., VII 323, VIII 453; prosthaphæresin excoluit I xxxii, 316 sqq., VII 281, perpendicularis oscillatorii horologia instruxit I xlv, tabulam sinuum excogitavit VI 299, 347, 373.
- Bugge*, Thomas, professor Hafnien-sis, I xlvi, X x.
- Bugislaus*, dux Pomeraniæ, VIII 378.
- Buren*, Daniel, VIII 219.
- Buren*, Margareta, VIII 219.
- Busch*, Christianus, XIV 84.
- Busch*, Georgius, de nova stella III 45, 279—288, de cometa anni 1577 IV 365 sq.
- Butter*, medicus, VI 214.
- Bylovius*, Levin, consiliarius marchionis Anspachensis II 30.
- Byrialdus* IX 344.
- Cadomi* latitudo et longitudo V 310.
- Cæli* natura VII 185 sqq., 229 sqq.
- Cæsar*, Gajus Julius, VIII 117, IX 150.
- Calandrinus*, Cæsar, VIII 268.
- Calendarium Gregorianum* I lvii, III 338, V 179 sq., VII 82 sqq., 274, Tychonis iudicium de eo VII 86 sq., 381, VIII 107.
- Calendarium Julianum*, VIII 117, IX 150.
- Callippus* I viii.
- Calmaria* latitudo et longitudo V 309.
- Calvinus*, Johannes, contra astrologos, I 170 sq., VII 41.
- Camerarius*, Elias, stellam novam in principio Octobris se vidisse dicit II 452, ejus libellus de stella III 205—212, cf. VII 16.
- Camerarius*, Henricus, VIII 378, 404.
- Camerarius*, Joachimus, VI 58, VII 56, VIII 293, 453; de cometis II 328, 455, VII 144, 164, epistolæ Tychonis ad eum VII 42, 276—278.
- Caminaeus*, Balthasar, VIII 453; epistola ejus ad Tychonem VIII 406.
- Campanus*, Johannes, VIII 453, divisio cæli VIII 217.
- Campia* latitudo et longitudo V 311.
- Canales* instrumentorum I xxv, V 320 sq.
- Cancri fluviales* VII 115.
- Cantuarie* latitudo et longitudo V 310.
- Cantzler* (Chancellor), Richardus, subdivisio instrumentorum per lineolas transversaliter punctuatas III 184, 398, V 320.
- Capitaneus*, Henricus, IX 344.
- Capitaneus Brandeisensis* vid. Muehlstein.
- Capuæ* latitudo et longitudo V 311.
- Capuciniani monachi* VIII 418 sq., 450 sq.
- Cardanus*, Hieronymus, VIII 453; de astrorum judiciis I 178, 314, de motu absidis Solis II 57, 444, de locis stellarum per eclipses lunares vel per Venerem rectificandis II 155, 448, de natura cometarum III 166, de caudis cometarum IV 137, de vaporum altitudine IV 326, de Veneris epicyclo VII 158, de magorum stella II 325, de natalitio Lutheri III 290.
- Cario* de directionum significationibus VII 103, 105.
- Carmen* in Copernici instrumentum parallaticum VI 266 sq., in Ptolemæi effigiem VI 269 sq., in Copernici effigiem VI 270 sq.
- Carmina* Tychonis VII 96, IX 171—215, XV 3—5, conspectus eorum IX 321 sq.

- Carneades* VII 17.
Carolus, dux Austriae, IX 344.
Carolus, dux Sueciae, VII 300, VIII 214, 277, 283, 288 sq., 376, 378, 380, 403, 405, 407, 414, IX 344, XIV 174.
Carolus Magnus VIII 417.
Caselius, Johannes, VIII 453; epistola ejus ad Tychonem VII 121.
Casparus, chartopæus, VII 300.
Cassellarum poli altitudo II 39, III 8, 114, 117 sq., 128 sqq., 214, 396, IV 186, V 309, 311, VI 57, 61, 66 sq., 77, 87, 111, longitudo IV 519, V 309, 311, VI 57, 165.
Cassiopea, Æthiopum regina, III 230 sq.; cur inter sidera reposita sit II 312 sqq., carmina Arati, Germanici, Avieni de ea II 315.
Cassiopeæ sidus, loca stellarum in eo, II 289 sqq., 337 sq., stellarum dispositio II 317 sqq., 354, distantiae X 277—282, 416—422, XI 230—238; Cassiopeæ undecima sitne nova anni 1572 III 234 sqq., 240, 254 sqq.
Cassolius XIV 123.
Cassoviæ latitudo et longitudo V 311.
Castalio (Castellio), Sebastianus, Bibliæ interpres, III 151, 315, VII 133, 186, 231 sqq., VIII 454.
Catalogus stellarum Tychonis vid. Stellarum catalogi, Stellarum inerrantium restitutio.
Catharina IX 344.
Catharina, electrix Brandenburgensis, epistola ejus ad regem et reginam Daniæ XIV 132—133, ad Tychonem XIV 135.
Caukerchius, Rudolphus, ode ejus ad Tychonem V 156—161, VIII 64.
Caurianus, Octavius, VIII 334; epistola ejus ad Tychonem VIII 330.
Cepheus II 313 sq.
Cervinus (Hjort), Christophorus, IX 344.
Chaldæi de cometis III 266.
Charisius, Jonas, IX 344.
Chasmata VI 192.
Chemia vid. Spagyrica ars.
Chioccius, Andreas, carmina ejus ad Tychonem V 129 sq.
Christianus II, elector Saxoniae, VIII 454; epistola ejus ad præfectum ærarii XIV 148—149, epistola Tychonis ad eum VIII 313—314.
Christianus III, rex Daniæ et Norvegiæ, I 63.
Christianus IV, rex Daniæ et Norvegiæ, IX 344; horoscopus ejus a Tychone confectus I 181—208, indies proficit VI 229, Hvenam adiit V 30, Rantzovium invisit VIII 36, Tychonis elegiam ad Daniam inspexit VIII 63 sq., IX 211, epistolæ ejus ad anonymos XIV 48, 63, ad Kaasium XIV 62, ad Tychonem XIV 121—123, ad electorem Saxoniae XIV 243—245, vituperatura Tychone VIII 10, 112, excusatur I LVIII, V 151, VIII 49, 61, 97, 164, IX 210, XIII 104.
Christiernus II, rex Daniæ, Sueciæ et Norvegiæ, I 63.
Christiernus de Ebenthod, discipulus Tychonis, XIV 45.
Christiernus, piscium mercator, VII 54.
Christiernus, præfectus, IX 344.
Christiernus Cimber, discipulus Tychonis, IX 344, XIV 45.
Christiernus Johannis, Ripensis, discipulus Tychonis, VIII 150, 454, IX 344, XIV 45; in Hollandia versatus est VIII 84, 102, 262, eclipsin Lunæ anni 1592 observavit XII 197, eclipsin Solis anni 1593 XII 268, cometam anni 1593 VII 359, XIII 388—389, eclipsin Solis anni 1595 XII 371, anni 1598 XIII 118—119.
Christina, uxor Tychonis, XIV 191, 242 sq., 246, 262, legitimam ejus uxorem fuisse liberi testantur XIV 298—299.
Christina Barbara, filia Tychonis junioris, epistola ejus ad electorem Saxoniae XIV 307.
Christmann, Jacobus, XIV 172.
Christophorus IX 344.
Chytræus, David, VII 69 sq., 82, 254, VIII 267, 454, XIV 119; d. 8 Novembris stellam novam primum conspexit II 453, libellus ejus de nova

- stella III 225 sqq., de cometa anni 1577 III 227 sq., IV 366 sq., epistolæ ejus ad Tychonem VIII 3, 116—117, chronicon VIII 359 sqq., 377 sqq., 389 sqq., 403, 414, epistola Tychonis ad eum VIII 283—286, mortuus VIII 338, 359.
- Chytræus*, Nathan, carmen ejus ad Tychonem VI 6, VIII 454, IX 216.
- Ciaparenius*, Raphael, epistola Tychonis ad eum VIII 302.
- Cicero*, Marcus Tullius, I xxxvi, Arati carmen vertit II 315.
- Cimbrishafniæ* poli altitudo V 304, 309, longitudo V 309.
- Claricus*, Johannes, capitaneus Scotus, VII 40.
- Claudianus*, poeta, de nova quadam stella III 51, 56 sq., 120.
- Claudius*, jurisconsultus, IX 344.
- Clavius*, Christophorus, I xxiv, VIII 454, XIV 310 sq.; de horologiis solaribus V 121, 323, calendarium Gregorianum defendit V 180, 328, VII 381 sq., GnomotERICA VII 88, 100, 260, 381, VIII 201, commentarius in Sacrobosci Sphæram VII 367, 381.
- Cleanthes* VII 17.
- Clingius*, Bartholomæus, VIII 378, 454.
- Cobergi* latitudo et longitudo V 311.
- Colbergæ* latitudo et longitudo V 311.
- Coldingi* poli altitudo V 304, 309, longitudo V 309.
- Colmariae* latitudo et longitudo V 311.
- Coloni Hvenenses* XIV 7, 15—19, 102 sq.
- Coloniæ* latitudo et longitudo V 309, 311.
- Coltzevius*, Johannes, IX 344.
- Cometarum* natura et distantia I xxxiv sqq., XLIII, 17, 27, II 374, III 25, 98, 107, 111, 177, IV 418, V 116 sq., VI 17, 65, 170, VII 155 sq., 206 sqq., 237, 263 sqq., duratio II 379, opiniones Albumasaris III 105, 111, Philippi Appiani III 159, 165, Aristotelis III 141, 165, Cardani III 166, Nolthii III 264 sqq., Ptolemæi III 160, 163, Tychonis III 141, 151, 153, 210, 220, 265, 308, IV passim, varia genera cometarum secundum Plinium III 122, 160, 167, 295, 397, cometas post eclipses et planetarum conjunctiones apparere opinantur Ptolemæus et Albumasar III 158, 161, cometarum circuitum oblongum fortasse esse suspicatur Tycho I xxxv, IV 162, cometarum caudæ a Sole aversæ III 165, 398, IV 137, 419, a Veneris stella IV 139 sqq. — Cometæ annorum 427 et 372 et 341 ante Chr. III 207, 400. — Cometa Attalo regnante conspectus VI 156. — Cometa Neronis tempore conspectus III 135, 225, 396. — Cometa Hadriani tempore conspectus (a. 132) II 328, 454. — Cometa anni 389 III 57, 115. — Cometa anni 393 vel 398 III 51, 56 sq., 119 sq., 394. — Cometa anni 945 II 328, 454 sq., III 219. — Cometa anni 1006 I 32, 311. — Cometa anni 1264 II 328, 454 sq., III 46, 219, 223. — Cometa anni 1457 VI 360. — Cometa anni 1472 (falso sæpius indicatur 1475) II 457, III 140, 393, 396, IV 133, 208, 213, 290, 351, VI 156. — Cometæ annorum 1531 et 1532 et 1533 II 457, III 140, 397, IV 322, 351, 413. — Cometæ annorum 1538 et 1539 II 457, IV 137. — Cometa anni 1556 III 228, IV 137, 351. — Cometa anni 1558 VI 155 sq., 173. — Cometa anni 1572 VII 189. — Cometa anni 1577 I xxxiv, II 379, III 156, 228, Tychonis liber de eo IV 5—396, libellus Germanico sermone conscriptus de eodem IV 381—396, observationes Tychonis IV 11—19, XIII 288—304, ab Hagecio observatus IV 107 sqq., VII 59, a Cornelio Gemma IV 113, 238 sqq., ab Hassiæ landgravio IV 182—185, a Rothmanno VI 160, quando apparuerit IV 5 sq., 11, 384, 498, corpus, color IV 5, cauda IV 5, 209, 328, 386, VI 172, loca stellarum, quibus in observando cometa Tycho usus est IV 20—32, cometæ longitudes et latitudines IV 38—61, ascensiones rectæ et declinationes IV 62—69,

- motus respectu *Æquatoris* et *Eclipticæ* IV 70—81, 177—179, regularis IV 85 sqq., tardior quam *Lunæ* IV 86, 93, in regione *ætherea* constitit IV 82—134, portionem circuli maximi designavit IV 84 sqq., 298, 385, 451, parallaxin nullam vel plane exiguam præbuit IV 94, 187 sqq., 212, 279, 387, 445, VII 59, 64 sq., circa *Solem* movebatur IV 159, remotior fuit a *Sole* quam *Veneris* stella IV 161, cursus inæqualis IV 162, 385, orbita formæ fortasse oblongæ IV 162, cum plano *Eclipticæ* angulum fecit IV 221, 296 sqq., caudam a *Sole* porrexit IV 386, a *Veneris* stella IV 139 sqq., 239, 276, VI 171, vera magnitudo capitis et caudæ IV 171—176, 389, astrologica cometæ significatio IV 389—396. — Cometa anni 1580 IV 222 sq., 350, 430, 467, VI 298, 372, VII 59, 66 sq., a Wittichio observatus IV 422, observationes Tychonis XIII 305—333. — Cometa anni 1582 VII 73, cauda a stella *Veneris* dirigebatur IV 175, observationes Tychonis XIII 334—335. — Cometa anni 1585 III 86, 119, 163, 265 sq., 281, 301, IV 223, 350, VI 25, 31 sqq., observationes Tychonis VI 41—48, XIII 336—371, commentationes Tychonis et *Eliæ Olai* de eo IV 399—414, 512 sq., portionem circuli maximi descripsit IV 400, 409, parallaxin præbuit vix sensibilem IV 401, 409, 467 sq., VI 46, 65, astrologica ejus significatio IV 402—407, 409—414. — Cometa anni 1590 VI 203—212, VII 228, 265, 310, observationes Tychonis XIII 372—387, a Rothmanno observatus VI 217, ab Hagecio VII 255, caudam a *Sole* porrexit VI 207, parallaxin nullam admisit VI 208 sqq. — Cometa anni 1593 VI 17, VII 357 sq., 359 sq., observationes Christierni *Johannis Ripensis* XIII 388—389. — Cometa anni 1596 a Tychone observatus XIII 390—393.
- Compluti* latitudo et longitudo V 311.
- Compostellæ* latitudo et longitudo V 310, 311.
- Concinus*, *Cosmus*, VIII 311; epistolæ Tychonis ad eum VIII 301, 309—310.
- Confluentiæ* latitudo et longitudo V 309.
- Conjunctio* Saturni et Jovis a. 1563 I 156, III 164, IV 404, 410, V 106 sq.
- Conjunctiones* maximæ planetarum, I 31, III 164, 232, 311, IV 403.
- Constantiæ* latitudo et longitudo V 309, 311.
- Constantinopolis* latitudo et longitudo V 310.
- Contra astrologos pro astrologia*, libellus Tychonis, I 36.
- Copernicus*, *Nicolaus*, ejus systema I VII, xxxvi, 149, II 14, III 175, 203, IV 156, 388, 446, 473, V 5 sq., 173, 176 sq., VI 23, 102, VII 199 (cf. *Systema Coperniceum*), ignarus divitiarum suarum I VIII, instrumentum ejus parallaxicum II 31 sq., IV 464, V 6, 45, VI 103 sq., 126, 253, 265 sqq., VII 133, de armillis VII 19, ejus commentariolus II 428, 460, epistola ad B. Wapowsky IV 292, 507, Terram moveri et aerem supremum immotum esse docuit II 378, lapsus est in apogæo et eccentricitate orbitæ Solis II 29 sqq., 89, V 111, VI 126, VII 60, 71, 78, 140, 291, apogæum Solis per eclipses lunares examinasse dicitur II 63, ejus doctrina de variata eccentricitate orbitæ Terræ III 224, 401, IV 257 sq., VI 348, de obliquitate *Eclipticæ* II 18, 445, IV 224, V 131, erravit in latitudine *Fruenburgi* definienda I xxviii, II 29 sq., VI 103, VII 280, 298, theoria præcessionis II 212, III 338, IV 224, V 113, VII 268, VIII 397, trepidationem æquinociorum accepit I xlvi, de parallaxi Solis II 445, de correctione calendarii V 178, theoria *Lunæ* I lii, II 121, 130 sq., de *Lunæ* latitudine VII 153, de parallaxi *Lunæ* IV 39 sq., de vera magnitudine Solis et *Lunæ* II 416, erravit in tabulis planetarum VII 269, in nodis orbitarum planetarum VIII 161, de planetarum

- parallaxi annua III 197, lapsus est in Martis apogæo et eccentricitate VII 359, 370, de motu Mercurii III 78, 395, IV 224, VI 217, 365, Mercurium non observavit II 89, 445, V 109 sq., 323, observationes Mercurii a Walthero mutuatus est V 110, a prima Arietis stellarum longitudes numeravit II 33, 161, 228, 443, erravit in hujus stellæ longitudine definienda II 229, Spicæ Virginis declinationem invenit II 222, loca duodecim stellarum cum locis a Tycho inventis comparata III 386 sq., catalogus stellarum II 151, 281, III 337, de immensa stellarum distantia II 457, III 198, de scintillatione earum II 457.
- Cordubæ* latitudo et longitudo V 311.
- Corinthi* latitudo et longitudo V 310.
- Corraducius*, Rudolphus, procancellarius, VIII 68, 108, 128 sqq., 131, 177, 233, 271 sq., 341 sqq., 408, XIV 179 sq.; epistola ejus ad Hagecium VIII 120, ad Caurianum VIII 446—447, ad Tychonem VIII 136—137, epistolæ Tychonem ad eum VIII 257—259, 314—315, 319(?).
- Cracoviæ* latitudo V 310, longitudo V 310, VIII 346.
- Craigus*, Johannes, ejus vita IV 515 sqq., VIII 454, IX 153 sqq., XIV 151, de cometarum distantia I xxxv, inventa ejus trigonometrica VII 240 sq., laudatur a Tycho VII 283, 307, Tychonis Apologetica responsio ad eum IV 417—476, Capnuranæ restructionis fragmentum IV 479—488, quæ de hoc scripto Tycho Rothmannum certiozem fecit VI 317—336, epistolæ ejus ad Tychonem VII 175—182, 191—193, 239—242, 334—335, 362—364, epistolæ Tychonem ad eum VII 195—196, 308—319.
- Craigus*, Thomas, VII 355, VIII 454; epistola ejus ad Tychonem VII 364 365, epistola Tychonem ad eum VII 365—366.
- Cramer*, Daniel, VIII 454, IX 344; epistola ejus ad Rosenkrantzium VIII 37—43, 206, ad Tychonem VIII 69, propempticon VIII 69, 75, 110, 249, 268, 291, 333, epistolæ Tychonem ad eum VIII 184—187, 291—292.
- Crassæus* VIII 99.
- Cremonæ* latitudo et longitudo V 311.
- Crepusculum* VI 141, 150, 169, 181 sq., 187 sqq., 364, VIII 397, XI 315; cf. Refractio.
- Creutiæ* latitudo et longitudo V 311.
- Crinitæ*, i. e. cometæ cauda destitutæ I 12, III 265.
- Crol*, Johannes, vid. Aurifaber.
- Croneburgenses inscriptiones* IX 190—191.
- Crot*, Cla., IX 345.
- Cruciger* III 136, 146.
- Cubenbachi* latitudo et longitudo V 311.
- Cubitus* Tychonem II 455, IV 511, V 319.
- Curcellius*, Guilelmus, VII 383.
- Curtius*, Albertus, edidit Tychonem observationes X III sqq., XIV 308—309.
- Curtius*, Jacobus, procancellarius imperii et imperatori a secretis, II 10, VII 183, 213, 254, 305, 332 sq., 343, 358 sqq., VIII 353, 409, 412, 415, 454, de divisione arcus I xxiv, V 121 sqq., 324, de triangulis VIII 201, imperatoris privilegium Tycho misit V 119 sq., VII 262, 282, 331, judicium ejus de Craigo VI 318, 335, VII 311 sq., de systemate Tychonico VII 145, 201 sqq., 246, de Urso VIII 204, epistola ejus ad Tychonem V 119—122, epistolæ Tychonem ad eum VII 256—262, 285—288, 348—350, mortuus VII 368.
- Cuspinianus* III 57.
- Cynosura* vid. Stella polaris.
- Daa*, Georgius, XIV 254.
- Danæus*, Lambertus, VI 185, 364.
- Daniel* propheta de imperio Romano III 231, VIII 417.
- Dante* I xxxvi.
- Dantisci* latitudo et longitudo V 310, 311.
- Danzæus*, Carolus, legatus Gallicus, I 171 sq., 313, III 94, 224, 313, V 143,

- VII 25 sqq., 97 sq., VIII 260, 454, IX 345; epistolæ ejus ad Tychonem VII 34—35, 40—41, epistolæ Tychonis ad eum VII 55—56, 75—76.
- Dasselius* vid. Hardewigus.
- Dasypodius*, Cunradus, I 173; de cometis IV 361 sq.
- Daventriæ* latitudo et longitudo V 311.
- David*, auriga, VII 91.
- David Petri*, præfectus Tychonis, VIII 12, 455, XIV 162, 188; eclipsin Solis anni 1598 observavit XIII 120—121.
- David Sascerides* IX 345, XIV 44, 78 sqq., 84.
- Deddeken*, Hildemannus, VIII 220.
- Dee*, Johannes, VI 183, VII 141, 284, VIII 455, XIV 144; de parallaxibus et de nova stella III 176, 203—205, de subdivisione instrumentorum III 398 sq., a Craigo oppugnatus IV 480, VI 330.
- Democritus* de cometis III 86, IV 382.
- De mundi ætherei recentioribus phænomenis* liber I xxxiv, IV 5—378, prior forma IV 491 sqq., quando compositus IV 492, numerus exemplorum IV 493, VII 213, duæ præfationes IV 494—497, Rothmanno missus VI 132, Hagecio missus VII 120, Sculteto missus VII 123, Rantzovio missus VII 127, Peucero missus VII 131, Bruçæo missus VII 142, Craigo missus IV 515 sq., VI 318, VII 175, Camerario missus VII 276, Savello missus VII 284, Magino missus V 125, VII 289.
- Den* (Danus), Laurentius, VII 56, VIII 31.
- De nova stella* liber I 1—142, 309—311, III 93 sqq., præcipua ejus pars iterata III 97—107.
- Dessæ* latitudo et longitudo V 311.
- Diarium anni 1573* I 75—130, 311, anni 1586 vid. Elias Olai, annorum 1598—99 V 182 sqq.
- Didacus a Stuniga* de distantia Solis imminuta VI 348.
- Dietrichstein*, Franciscus, cardinalis, VIII 256, 310, 455.
- Diggesæus*, Thomas, VII 99, 284, 379, VIII 455; de nova stella III 167—203, IV 470, de parallaxibus III 34 sq., 177 sqq., 399 sq., IV 448 sqq., VII 71, 207, de subdivisione instrumentorum III 184, de radio IV 463, a Craigo oppugnatus IV 480, VI 330.
- Dionysiaca* annorum numeratio II 307, V 166, VIII 236, 245, 265, 281.
- Dionysius Areopagita* II 320.
- Dioptræ* II 153, IV 372 sqq., V 46, 154 sq.; cf. Pinnacidia.
- Directiones* I 191, 314, VIII 217 sq., 304.
- Dockumi* latitudo et longitudo V 311.
- Doldius*, Leonhardus, VIII 383, 455.
- Dominicus Maria* (Novara) V 325, VII 297 sq., VIII 460.
- Dorbæi* (Duaci?) latitudo et longitudo V 310.
- Douza*, Janus, VII 372, 374, VIII 108, 455.
- Draco* Juticus VII 76.
- Draconis* stella, locus ejus prope polum Eclipticæ II 213.
- Dresdæ* latitudo et longitudo V 309, 311.
- Dronthemii* latitudo et longitudo V 309, 312.
- Drusius*, Johannes, VII 229, VIII 455.
- Dudithius*, Andreas, IV 453, VII 63, 123 sq., 182, 214, VIII 455; præfatio in Hagecii librum de cometa anni 1580 IV 455, VI 327 sq.
- Duns*, Johannes, Scotus philosophus, VI 335, VII 347.
- Durerus*, Albertus, pictor, II 280, VI 222.
- Eboraci* latitudo et longitudo V 310.
- Eclipses* Lunæ et Solis a Tychone observatæ II 98; vid. Aldebora, Luna, Sol, Venus.
- Eclipticæ* declinationis tabula II 66 sqq., 85 sq.; vid. Obliquitas.
- Edenburgi* Germaniæ latitudo et longitudo V 311.
- Edenburgi* Scotiæ latitudo et longitudo V 310.
- Elbingæ* latitudo et longitudo V 311.

- Electra* vid. Pleiadum septima.
- Elegia* in Uraniam I 65—70, ad Daniam IX 208—211, XIII 102—104, Rosenkrantzio missa VIII 12.
- Elias Olai* IX 345, XIII 345, XIV 44, Fruenburgum missus Ixxviii, xxxiii, II 30, V 45, 110, 343, VI 103, observationes Fruenburgi factæ X 345—348, observationes mutationis aeris I xxxiii, IX 319, diarium edidit anni 1586, ubi egit etiam de cometa anni 1585, IV 513, VII 89, 102, 104, 108, VIII 218, præfatio diarii a Tychone adumbrata IX 147—150, urbium quarundam poli elevationem determinavit V 342.
- Elisa* (Elsa, Elsula), uxor Nicolai Kragii, VIII 99, 272, XIV 83, 89, 95 sq.
- Elisabetha*, filia Pauli pharmacopolæ, IX 345.
- Elisabetha*, regina Angliæ, VII 377, VIII 293.
- Elisabetha*, uxor Udalrici, ducis Meckelburgensis, VI 64.
- Ellenberger*, Henricus, epistola ejus ad Tychonem VIII 21—22.
- Embdæ* latitudo et longitudo V 310, 311.
- Embeccensis* poli altitudo III 268.
- Enchusæ* latitudo et longitudo V 311.
- Enno*, comes Orientalis Frisiæ, VIII 422.
- Eobanus*, poeta, I 152.
- Ephemerides* vid. Sol.
- Ephemerides* Stadianæ V 107.
- Epictetus* VII 17.
- Epicurei* de magnitudine Solis, Lunæ ceterorumque astrorum IV 152sqq., sidera humoribus nutriri docent VII 156.
- Epicycli* I v, VIII, II 397, 458, III 197, IV 156 sq., V 115, VII 24, 29, 128, 163.
- Epigenes* de cometarum generibus III 265 sq.
- Epigrammata* Tychonis IX 211—215.
- Epistolæ* Hassiæ landgravio et Christophoro Rothmanno datæ I L, Epistolarum astronomicarum liber primus VI 3—341, numerus exemplorum VI 345, liber secundus X 13, aliæ epistolæ Tychonis et ad eum datæ VII—VIII, XIV, ratio Tychonis epistolas edendi VI 22 sq., VII 393 sq.
- Epitaphium* Tychonis XIV 241.
- Erasmus* (Rotterdamensis) VII 23.
- Erasmus Petri*, colonus, IX 345, XIV 56 sqq., 63 sqq.
- Erastus*, Thomas, VIII 455; de astrologia I 166 sq., VII 16, de cometa anni 1577 IV 293, 359, VII 159, de Aristotele IV 471.
- Eratosthenes* I XLVII, VIII 173.
- Erfordiæ* poli altitudo III 282, V 309, 311, longitudo IV 519, V 309, 311.
- Ericus* XIV, rex Sueciæ, VIII 277, 283.
- Ernestus*, archiepiscopus Colonien-sis, VII 379 sqq., VIII 80 sqq., 89, 95 sq., 110, 455; epistolæ ejus ad Tychonem VIII 71—72, XIV 140, ad Rantzovium XIV 140, 309—311, ad imperatorem XIV 141, ad Barvitium XIV 141—142.
- Evardus*, stannorum fusor, IX 345.
- Euclides* I 146.
- Euctemon* VIII 87, 104.
- Eudoxus*, I VIII; observatorium ejus I XVI.
- Everartus*, Martinus, Ephemerides fecit VIII 35, 61 sq., XIV 173.
- Euler*, Leonardus, I LIV.
- Euripides* de stellarum nominibus II 256.
- Exorcismum* ut e formula baptismi omitteret, Tycho sacerdoti persuasit I LVII, VIII 7, XIV 122.
- Exseccius*, comes Angliæ, VIII 407 sq., 455.
- Ezechias*, retractio umbræ gnomonis ejus tempore facta II 317, III 89, 139.
- Fabricius*, David, VIII 28(?), 182 sq., 216, 420 sqq., 455, XIV 172 sq., 196 sq.; epistolæ ejus ad Tychonem VIII 13—14, 191—192, commentationes ejus de parallaxibus et de instrumentorum fabrica ad Tycho-

- nem missæ VIII 425—430, observationes ejus ad Tychonem missæ I II, 319, XIII 114—115, 150—159, 191—192, 242—245, 284—285.
- Fabricius*, Jacobus, VIII 455, IX 345.
- Fabricius*, Paulus, VII 147, 182, 213, 295, VIII 456; stellam novam sub Octobris finem apparuisse dicit II 452, scriptum ejus de stella III 42, 43—44, nullam parallaxin invenit III 44, IV 470.
- Farnsbeck*, Georgius, VIII 378.
- Felicianus ab Herberstein* VII 166.
- Fels*, Daniel, VIII 240 sq., 256 sq., 298 sq., 317; epistola ejus ad Tychonem VIII 232—233.
- Ferdinandus*, archidux, postea Ferdinandus II imperator, VIII 370; epistola ejus ad Johannem Fridericum, ducem Wirtembergiæ, XIV 279—280, ad præfectos ærarii XIV 296, ad cameram Bohemicam XIV 303.
- Ferdinandus III* imperator, epistola ejus ad ordinem Dominicanorum S. Ægidii XIV 304—305, ad præfectum ærarii XIV 309.
- Ferdinandus*, comes a Schlick, VII 357.
- Ferdinandus*, magnus dux Etruriæ, epistola ejus ad Tychonem VIII 154, epistolæ Tychonis ad eum VIII 118—119, 242—244, 398—399, 418—420.
- Ferrariæ* latitudo et longitudo V 311.
- Finæus*, Orontius, VII 82, 86, 406, VIII 293.
- Fincke*, Thomas, XIV 105, 144; Geometria rotundi I 316 sq.
- Fiornouelli*, J. M., de cometa anni 1577 IV 510.
- Firmamentum* III 151, VII 185 sqq., 231.
- Fischer*, Tobias, poeta, VIII 236, 265, 456; epistola ejus ad Tychonem VIII 268—270, epistola Tychonis ad eum VIII 321—323.
- Flamsteedius*, Johannes, stellarum catalogum confecit I XLVI.
- Flemlæse* vid. Petrus Jacobi.
- Flensburgi* latitudo et longitudo V 311.
- Florentiæ* latitudo et longitudo V 310, 311.
- Florentius*, Arnoldus, IX 344.
- Florentius*, Jacobus (Langrenus), globos cælestes confecit II 282, VI 347, VIII 322.
- Flotius*, Matthias, IX 345.
- Foss*, Andreas, episcopus, IX 345, XIV 87; epistola ejus ad Longomontanum XIV 243.
- Fox*, Petrus, IX 345.
- Fracastorius*, Hieronymus, VII 212, VIII 456; stellas centro mundi appropinquantes conspiciendas se præbere ait III 114 sqq., 122, 127, cometas observavit II 379, 457, caudas cometarum a Sole aversas esse ait III 398, IV 137.
- Francofurti* ad Mœnam latitudo et longitudo V 309, 311.
- Francofurti* ad Oderam poli altitudo III 206, V 309, 311, longitudo IV 519, V 309, 311.
- Francus*, Johannes, VII 184.
- Franeckeræ* latitudo et longitudo V 310.
- Frangipanus*, Cornelius, de nova stella III 254—259, VII 212, 251, 270.
- Frantzius*, Thomas, VIII 154, 169.
- Franzius*, Wolfgang, VIII 456; epistola ejus ad Tychonem VIII 264—265, epistola Tychonis ad eum VIII 280—281.
- Freder*, Johannes, VIII 284, 456, IX 345.
- Frederichus*, baro, IX 345.
- Frerbergæ* latitudo et longitudo V 311.
- Friburgi* latitudo et longitudo V 310, 311.
- Friderichsburgi* latitudo et longitudo I 185.
- Fridericus II*, rex Daniæ et Norvegiæ, IX 345; horoscopus ejus I 132 sqq., 136 sqq., insulam Hvenam Tychoni concessit V 109, 139, 151, VII 26 sqq., XIV 5, 26 sq., mercedem ei tribuit XIV 4—6, Nordfjord ei concessit XIV 8, 11, 16, villas in Scania sitas ei concessit XIV 8—9, Croneburgum

- condidit IX 190, epigrammata Ty-
chonis in mortem ejus IX 192.
- Friis*, Albertus, VII 77, XIV 49.
- Friis*, Christianus, cancellarius, VIII
21, 93, 175 sq., 227, 230, IX 345, XIII
101, XIV 55, 57, 103, 106, 123, 158,
178 sqq.; epistola ejus ad Tychonem
XIV 101—102, epistola Tychonis ad
eum XIV 99—101.
- Friis*, Fridericus R., edidit epistolas
Tychonis VII 404, observationes
cometarum X xi.
- Friis*, Ivardus, VIII 135, 276.
- Frischlin*, Nicodemus, VI 183 sq., 198,
201.
- Fritsch*, Johannes, VIII 371.
- Frobenius*, Georgius, XIV 174.
- Fruenburgi* poli altitudo I xxviii, II
30, 443, V 45, 305—307, 310, VI 58,
72, 103, longitudo V 310.
- Fuerst*, Bernardus, Kiliensis, XIV 251,
254.
- Fuggeri* VIII 202 sq.
- Fuggerus*, Marcus, VII 36, VIII 456.
- Fuggerus*, Philippus Eduardus, VIII
313, 354.
- Fuller*, Guilielmus, VII 193, 239, 334.
- Fullo*, Didericus sive Desiderius, ci-
vis Hafniensis, VII 123 sq.
- Fulvia Olympia Morata* IX 325 sq.
- Funus* Tychonis XIV 233.
- Galaxia* asterismum Cassiopeæ tran-
sit II 317, ejus materia III 68, 305,
VII 235 sq., opiniones Aristotelis III
305 sqq., opiniones Peuceri VII 188.
- Galen* medicinæ non fidebat Tycho
I xi, XLVIII, VI 192 sq., 224.
- Galilæus de Galilæis* V 130, VIII 226,
228; de distantia cometarum I xxxv,
de causa æstus maris I xli, de sy-
stematè Tychonico I xlili, epistola
Tychonis ad eum VIII 311—312.
- Gallici libri* de nova stella III 402.
- Ganti* latitudo et longitudo V 310, 311.
- Garcæus*, Johannes, VIII 421, 456.
- Gassarus*, Achilles, vaticinatio de
nova stella III 219.
- Gassendus*, Petrus, systema Tycho-
nicum recepti I xlii.
- Gauricus*, Lucas, I 168; de ævo mundi
III 232, de natalitio Lutheri III 290
sq., 405.
- Geber* I xix, xxx, VI 146.
- Gedde*, Georgius, IX 345.
- Gegginga*, pagus prope Augustam
Vindelicorum situs, II 344, latitudo
II 350, 456.
- Gelalæus* (Gelal-ed-din, Gemal-ed-
din) I xviii, VIII 85, 105, 456.
- Gellius Sascerides* VI 357, VII 303 sq.,
374, VIII 456, IX 345, X 373, XI 143
sqq., 164, XII 149 sq., 318, XIV 44,
50 sq., Cassellas missus VI 133, in
Italiam profectus V 125, 324, VII
276 sqq., 286 sqq., Ursum vitupera-
vit VII 324, stipendium ei conces-
sum XIV 27, controversia Tychonis
contra eum XIV 71 sqq., 103 sq., Ty-
chonis epistolæ ad eum VII 278—
282, 305—307.
- Geminus* I xiii.
- Gemma*, Cornelius, VIII 456; de tem-
pore primæ apparitionis novæ stel-
læ II 453, III 67, 71, libellus ejus de
nova stella III 42, 67, 229, 394, nul-
lam ejus parallaxin invenit III 68,
76 sq., IV 471, loca stellarum quibus
usus est III 68, 72, quæ in stella præ-
cipue admiranda judicat III 70, de
loco stellæ polaris III 73, de magni-
tudine novæ III 77, num a Terra
recesserit III 78, 117, 204, per scin-
tillationem probat cometam eam
non fuisse III 79, 86, de stellæ signifi-
catione III 316, refert quæ de nova
stella scripserat Munosius III 80
sqq., de cometa anni 1577 IV 113
sqq., 238—251, 274, 362, 425, 445 sqq.,
VII 50, 157, de cometarum caudis
IV 137, 151, 239, VI 173 sq.
- Gemma Frisius* I xviii, VIII 456, ra-
dium astronomicum excoluit III
186, IV 369, V 97, 107, VI 285, VIII
293, de astrolabio V 99, de annulo
astronomico VI 286, de globo con-
ficiendo VII 150 sq., cometas ob-
servavit II 379, 457, IV 137, de co-
metarum caudis I 12, IV 137 sqq.,
150 sq., 208.

- Gemperlin*, Tobias, pictor, IV 235, 505, V 30, VII 46 sq., VIII 456.
- Genevæ* latitudo et longitudo V 310, 311.
- Genuæ* latitudo et longitudo V 310, 311.
- Geographia* I 146, V 116, VI 297, 371.
- Geographicæ observationes* V 294—300, 337—343.
- Geometria* I 145 sqq., V 5.
- Georgius Fridericus*, marchio Ansbachianus, VI 103.
- Georgius Ivari*, XIV 81 sqq.
- Georgius Michaelis* IX 345.
- Gerbertus* V 320.
- Gerken*, Gerhardus, VIII 220.
- Germanicus Cæsar* de fabula Casiopeæ II 315.
- Gesner*, Conradus, de animalibus VI 231, 233 sq., 238, 240, 242, 244, 248, bibliotheca VII 37.
- Giphanius* vid. Gyphanius.
- Girsitzæ* poli altitudo XIII 190, 236.
- Globi cælestes* Tychonis II 282, III 340, V 102—105, 113, 322, VI 16, 68, 255, 268, VII 10 sq., 56, VIII 322; globus Christiano electori Saxonie missus VIII 313, 316, globi Christiano principi Danie missi XIV 48.
- Globus* a Curtio confectus VII 357, 360 sq.
- Gnomonice* I 146, III 146 sq.
- Gœdelmann*, Johannes Georgius, VIII 129, 357, 360, 362, 377, 389 sqq., 402 sqq., 410, 413, 415, 456, XIV 211 sqq., 219 sq.; epistola ejus ad Tychonem VIII 118.
- Gog et Magog* III 314 sqq., VIII 417.
- Gordonius*, Patricius, epistola ejus ad Jonam Jacobi XIV 151.
- Gorlicii* latitudo et longitudo V 309, 311.
- Goropius*, Johannes, VII 51.
- Goslariæ* latitudo et longitudo V 311.
- Gothæ* latitudo et longitudo V 311.
- Goye*, Absalon, XIV 49, 57.
- Goye*, Falco, VI 118, 144, VII 110, IX 179, 322, 345, XIV 45.
- Goye*, Magnus, IX 345.
- Græcii* latitudo et longitudo V 311.
- Graminæus*, Theodorus, VIII 456; de nova stella III 289—294, Hagecium impugnavit VII 247, ab eo impugnavit III 42, de cometa anni 1577 IV 365, VI 176, 195.
- Granatæ* latitudo et longitudo V 310, 311.
- Granii* latitudo et longitudo V 311.
- Groningæ* latitudo et longitudo V 312.
- Groninges*, Brigitta, VIII 220.
- Grubbe* (Grube), Albertus, nauclerus Lubecensis, VII 123 sq.
- Grubbe*, Sivardus, IX 347, XIV 86, 88, 90.
- Grunbergæ* latitudo et longitudo V 311.
- Grupenhagii* latitudo et longitudo V 312.
- Grutzmacerus*, Dresdensis, VIII 327.
- Grynæus*, Johannes Jacobus, VIII 456, XIV 171 sq.; epistolæ Tychonis ad eum VIII 6—8, 69—71.
- Grynæus*, Simon, VII 21, VIII 456; de cometis IV 359—361.
- Gryne*, Johannes, IX 345.
- Gryphiswaldi* latitudo et longitudo V 310, 311.
- Gualtherus* vid. Walther.
- Guilandinus*, philosophus, III 51, 57.
- Guilelmus*, dux Bavarie, VIII 162.
- Guilelmus*, dux Curlandie, VIII 338, IX 347.
- Guilelmus IV*, landgravius Hassie, I xvi, xx, L, V 135, VI 345 sq.; observationes ejus II 38sq., observationes Solis cum tabulis Tychonis comparatæ II 61 sq., observationes stellæ novæ III 6—18, 114, 213 sq., nullam parallaxin stellæ attribuit III 9, parallaxin 3 minutorum vel minorem III 18, 113, 200, VII 13, observationes cometæ anni 1577 IV 182—185, 300, 461, VII 50, de cauda ejus IV 209, de cometa anni 1585 IV 223, stellarum fixarum loca determinavit II 156, 282 sq., III 131, 342, IV 23, VIII 347, instrumenta ejus IV 458, 461, VI 16, 31 sq., VII 190, usum pinnacidiorum atque subdivisionis per lineas transversales a Wittichio

- edoctus est IV 374, de refractione IV 42, epistolæ ejus ad Rantzovium III 129, IV 403, 458, VI 31—33, ad Peucerum III 17 sq., 114 sq., 127—129, ad Rothmannum VI 184, XIV 55, ad Tychonem VI 48—54, 59—60, 62—63, 106—109, 212—214, 225—226, 231—233, 240—242, 300—303, 303—304, Tychonis epistolæ ad eum VI 33—40, 63—75, 121—132, 162—166, 204—206, 223—225, 227—230, 234—239, 243—249, 296—299, 305—306, 370—373, mortuus VI 338, 340, 373, carmen manibus ejus VI 340, litteræ ejus ad scribam datæ XIV 60—61.
- Guruilda*, vidua Lagonis Brahe, VII 242.
- Gustavus*, princeps Sueciæ, XIV 174.
- Gustavus Adolphus*, rex Sueciæ, a Tychone significari visus est III 405 sq.
- Gusteropii* latitudo et longitudo V 312.
- Gutzlovius*, Jonathan, cancellarius Holsatiæ, VIII 94.
- Gyldenstjerne*, Absalon, VII 77.
- Gyldenstjerne*, Aslachus, IX 345.
- Gyldenstjerne*, Axillus, VI 244 sq., 247 sq., 305 sq., 337, 339, VIII 68, 456, XIV 15, 17, 49, 161, 186 sq.; epistola ejus ad Tychonem XIV 168—169, epistola Tychonis ad eum XIV 182—183.
- Gyldenstjerne*, Hannibal, XIV 65.
- Gyldenstjerne*, Henricus, VII 331, VIII 456, IX 191, 345.
- Gyldenstjerne*, Petrus, IX 345, XIV 49.
- Gyldenstjerne*, Predbjørn, XIV 89.
- Gyphanius*, Hubertus, VIII 271, 456.
- Hack Holgeri* IX 345.
- Hadrianus*, imperator, I 9.
- Hafniæ* latitudo et longitudo I 42 sq., 311, V 309, 312, longitudo IV 519.
- Hagecia*, Susanna, epistola Tychonis ad eam XIV 198—199.
- Hagecius*, Thaddæus, I XIX, III 206, IV 260, VI 21, VIII 457; Dialexin edit III 19, 283, IV 261, 354, 447, VII 72 sq., 93, 99, observationes novæ stellæ III 19—43, 76, VII 111 sq., nullam ejus parallaxin invenit III 28, IV 470, de loco ejus III 36, Diggesæi problemata tractavit III 177, Munosium refutavit III 247, Frangipanum III 254, 259, anonymum quendam Germanum III 262, de cometarum natura III 27, VII 249 sq., cometam anni 1577 observavit IV 107 sqq., 262 sqq., VII 50, 59, 112, librum edidit de eodem IV 261—287, 425, 447 sq., 506, parallaxin 5 minutorum vel majorem ei attribuit IV 269, 276, 447, scripsit contra Raimundum III 42, 247, VII 37 sq., 83, contra Graminæum VII 83, epistola ejus ad Mylium IV 287—293, VII 71, 145, de cometa anni 1580, ubi sententiam suam de cometis mutavit IV 293 sqq., 448, 463, VI 298, 372, 374, VII 64, 71, Curtii amicus V 119, judicium ejus de Craigo VI 318, 334 sq., VII 251 sqq., 312 sqq., epistolæ ejus ad Tychonem VII 37—38, 69—72, 98—99, 102—104, 145—147, 182—183, 184, 194, 220—221, 243—244, 244—255, 304—305, 345—347, 356—357, VIII 68, 119—120, epistolæ Tychonis ad eum VII 58—60, 64—69, 72—75, 93—97, 105—109, 110—114, 120—121, 122—123, 165—166, 196—218, 221—224, 225—228, 262—275, 319—326, 332—334, 342—343, 350—352, 358—361, 368—371, VIII 56—59, 145—147, epistola ejus ad Munosium VII 398—400, ad Corraducium VIII 119—120, 126, observationes ejus X 72 sq., 79, 90 sq.
- Hagen*, Petrus, VIII 72, 457.
- Hainzelia*, Elisabetha, filia Pauli Hainzelii, VII 49.
- Hainzelius*, Johannes Baptista, II 343 sq., VII 7, 50, VIII 457, XIV 236; epistola ejus ad Tychonem VII 21.
- Hainzelius*, Paulus, II 331, VII 7, VIII 457, quadrantem ingentem confecit I x, II 342 sqq., V 8, 89 sq., VI 91, VII 14 sq., observationes Solis a. 1572 II 61 sq., novam stellam d. 7 Novem-

- bris primum conspexit II 453, III 50, 67, 81, 200, observationes novæ stellæ II 347 sqq., 401 sq., epistola ejus ad Wolfium de nova stella III 50—52, VII 13, ad Tychonem VII 14—15, 19—20, 49—50.
- Haken*, eques, VII 121.
- Halæ Saxonum* latitudo et longitudo V 312.
- Halæ Suevorum* poli altitudo IV 353.
- Halberstadii* latitudo et longitudo V 312.
- Halle*, Christina, vidua Henrici Rantzovii, epistola Tychonis ad eam XIV 200—201.
- Halley*, Edmundus, I LIV.
- Hals*, Abel, viduæ Michaelis, prædium Gislev traditur XIV 4.
- Haly*, duo astronomi Arabes, I 32, 310 sq.
- Hamariæ* latitudo V 309, 342, longitudo V 309.
- Hamburgi* latitudo et longitudo V 309, 312.
- Hamburgensis* consul et senatus, epistola eorum ad Tychonem XIV 154—155.
- Hammer*, Nicolaus, IX 345, XIV 182, 190.
- Hamon*, Johannes, IX 345, XIV 45.
- Hanniwalt*, Andreas, VIII 422, 457.
- Hannovius*, Johannes, instrumentum parallacticum Copernici Tychoni dono misit II 32, V 45, VI 103, 265.
- Hardecius* comes mentionem facit cometarum a. 945 et 1264 II 455.
- Hardenberg*, Ericus, XIV 49.
- Hardewici* latitudo et longitudo V 312.
- Hardewigus a Dassell*, epistolæ ejus ad Tychonem VII 376, VIII 137—141, 455.
- Harlemi* latitudo et longitudo V 312.
- Harlingæ* latitudo et longitudo V 312.
- Harsach*, Christophorus, VI 183.
- Hartliebuis*, Johannes, VII 19.
- Hartliebuis*, Marcus, VII 17, 19 sq.
- Heerbrand*, Jacobus, contra calendarium Gregorianum VII 83, VIII 457.
- Hegelund*, Christianus, XIV 89, 94.
- Hegelund*, Jacobus, XIV 44.
- Hegelund*, Johannes, Petri filius, VIII 238 sq.
- Hegelund*, Petrus, episcopus, VIII 238, 457.
- Heidelbergæ* latitudo et longitudo V 309, 312.
- Heidler*, David, Lubecensis, XIV 198 sq.
- Heincius*, Ernestus, VIII 269 sq.
- Heinschius* VII 57.
- Heldorp*, Johannes, VII 119.
- Heller*, doctor, VIII 215, 233, 300.
- Helmstadii* latitudo et longitudo V 310, 312.
- Helsingburgi* latitudo et longitudo V 309, 311.
- Helsingoræ* latitudo et longitudo V 309.
- Hemmingius*, Nicolaus (Niels Hemmingsen), I 170, 172, 313, VII 16, 38, VIII 30, 457; epistola ejus ad Tychonem VIII 77, mortuus VIII 359.
- Henisch*, Georgius, de cometa anni 1577 IV 362.
- Henniochus*, Christophorus, epistolæ ejus ad Tychonem VIII 221—222, 407—408, epistola Tychonis ad eum VIII 289.
- Henricus III*, rex Galliæ, VII 194, 410.
- Henricus*, bibliopola, VI 64, 105.
- Henricus*, lapidarius, IX 345.
- Henricus*, princeps Scotiæ, VII 364, 415.
- Henricus*, scriba, XIV 84.
- Henricus*, servus Segurii, VII 98 sq., 102 sq., 105.
- Henricus Julius*, dux Brunsvicensis, VI 261, 287, VII 256, VIII 420 sq., IX 345.
- Heraclides Ponticus* de systemate mundi I XLII.
- Hermes Trismegistus*, I 160, VI 146, 194, VII 201, IX 197.
- Hero* de machinis VIII 251.
- Herritswad*, ubi Tycho stellam novam primum conspexit, I 65, II 307, poli altitudo II 341, X 40.
- Herwartus ab Hohenburg*, Johannes Georgius, VIII 457; epistolæ ejus ad

- Tychonem VIII 157—158, 172—175, 293, 300, 302, 305, 312—313, 353—354, 354—357, 366, 385—386, 393—394, epistolæ Tychonis ad eum VIII 159—163, 192—203, 222—226, 344—353.
- Herzogenbuhsæ* latitudo et longitudo V 312.
- Hesiodus* de stellarum nominibus II 256, de Nereidibus II 313, de Arcturi ortu vespertino VIII 87, 104 sq., 435 sq.
- Hévelius*, Johannes, de cometis I xxxv, stellarum catalogum confecit I XLVI.
- Heyn*, Nicolaus, XIV 83.
- Hierosolymorum* latitudo V 310, longitudo V 310, VIII 345.
- Hipparchus* I v, XIV, XXI, XLVII, 149, VIII 101 sqq.; parallaxin Solis definiuit I xxx, de apogæo et eccentricitate Solis II 28, æquinocetium autumnale observavit II 443, in æquinocetiis determinandis vacillavit V 174, de eccentricitate Lunæ II, de inclinatione orbitæ ejus II IV, stellis fixis operam dedit II 150 sqq., loca stellarum determinavit I XXI, II 237 sqq., novam stellam vidisse dicitur I 16 sqq., 30 sq., II 151, 321, III 25, 88, 94, 97, 107 sq., 229, 298, 301, 309, IV 449, V 5, 173, VII 134, 163, catalogum stellarum confecit I XLIII, II 322, III 255, 335, IV 449, V 113, VII 163, VIII 151 sq., instrumenta ejus II 152, animas humanas cæli partes esse dixit I 157, 183, in Arati et Eudoxi Phænomena VIII 102, 437.
- Hippius*, Johannes, IX 345.
- Hippocrates Chius* de caudis cometarum IV 136.
- Hippocrates Cous* I 166.
- Hispalis* vid. Sevilla.
- Hoffmann*, Johannes Fridericus, liber baro, XIV 206; epistola ejus ad Tychonem VIII 247—248, epistolæ Tychonis ad eum VIII 244—245, 254—256, 297, quadrans ejus VIII 353.
- Hog*, Jacobus, IX 345, XIV 143.
- Hoier*, Henricus, IX 345; carmen ad Tychonem VI 6.
- Holck*, Ditleff, IX 345, XIV 68, 104 sq.
- Holck*, Henricus, XIV 9, 12, 13, 24.
- Holst*, Jacobus, IX 345.
- Holst*, Johannes, XIV 83.
- Homelius*, Johannes, IV 260, VIII 457; de subdivisione instrumentorum I xxiv, III 184, V 107, 320, VI 90, de Lipsiæ poli altitudine III 144, de cometa anni 1556 IV 351, de horologiis sciotericis VII 33, Gnomonica VII 56.
- Homerus* de stellarum nominibus II 256, de cæli natura III 134.
- Homocentrici orbis* II 15, 410, VII 128 sq.
- Honorius*, imperator, III 57.
- Horologia* Waltheri I XXI, Buergii I XLV, Hassiæ landgravii IV 194, Tychonis non fidebat I XXII, II 156 sq., III 17, IV 499, VI 69, 101, experimenta ejus per argentum vivum II 157.
- Horoscopi filiorum regis* I xv, I 314, Christiani IV regis Daniæ et Norvegiæ I 181—208, Friderici II regis I 132 sqq., 136 sqq., Huldarici principis I 211—249, Johannis principis I 253, 280.
- Horsnesiæ* poli altitudo V 304, 309, longitudo V 309.
- Horstius*, Dethardus, VIII 416, 457.
- Hovi*, Albertus, VIII 337.
- Hvass*, C. H., observationes Tychonis edere instituit X x.
- Hvena* insula I xvi, descriptio V 150—152, VI 295, tabulæ V 150, 293, VI 295, arces V 151, 326, Tychoni concessa V 109, 139, 151, VII 27 sq., XIV 26—27, Curtio Barleben concessa XIV 245; cf. Uraniburgum.
- Hvenenses coloni* XIV 7, 15—19, 102 sq.
- Huernius*, Johannes, de cometa anni 1577 IV 364 sq.
- Huitfeldt*, Arnoldus, VIII 91, IX 345, XIV 49, 61.
- Hulagu Khan* I xvi.
- Huldaricus*, princeps, horoscopus ejus I 211—249.

- Hulsius*, Levin, bibliopola, V 317, VI 345, XIV 293.
Hunnius, Ægidius, VIII 126, 135, 457.
Hyginus de stellis Cassiopeæ III 241.
Hylech I 258, 314.
- Jachenow*, Petrus, senex, mechanicus, VII 305, 320, VIII 36, IX 345.
Jacobus VI, rex Scotiæ, VII 224, 241, 331, 333, VIII 338, IX 345, privilegium Tycho ni dedit II 11, poemata ejus II 12, VI 307, 309, IX 192, Hvenam adiit VI 206, 365, VII 256, 282.
Jacobus, citharædus, IX 345.
Jacobus, magister, VII 77.
Jacobus, Malmogiensis, IX 345, XIV 45.
Jacobus, studiosus, IX 345.
Jacobus Matthiæ IX 345, XIV 30.
Janus Jani, parochus Hvenensis, VIII 7, 12, XIV 104 sq., 188, 247.
Ibn Carfa I xxiii.
Ibn Junis I xxi, xxxii, liv.
Icones instrumentorum V 317 sq., VI 367.
Jenæ latitudo et longitudo V 309, 312.
Jengtius, Abraham, VIII 326.
Jenisch, Melchior, gener Pauli Hainzelii, VII 49.
Jessenius, Johannes, VIII 126, 129, 132, 134 sq., 265, 457, XIV 244 sq.; epistola ejus ad Tycho nem VIII 270—271, epistolæ Tycho nis ad eum VIII 281—282, 298—299, 316—317, oratio ejus de vita et morte Tycho nis XIV 234—240.
Indorum traditio de duabus stellis III 116.
Ingeldi, Martinus, IX 345, XIV 45.
Ingolstadii latitudo et longitudo V 309, 312.
Innocentius VIII, pontifex maximus, VIII 251.
Inscriptiones Uraniburgi et Stellæburgi V 104, 143, 148, VI 268, 272—276, 368 sq.
Instrumenta Tycho nis I xvii, II 247 sqq., 330 sqq., IV 465, V 6 sqq., VI 250—287, VII 62, 138 sq., eorum fata XIV 248 sqq.
- Joachimus* IX 345.
Joachimus, abbas, vaticinia edidit III 290, 405.
Joachimus, typographus, VII 81.
Joachimus Fridericus, elector Brandenburgensis, VIII 98; epistola ejus ad Valkendorffium et Friisium XIV 131, ad regem et reginam Daniæ XIV 131—132, epistola Tycho nis ad eum XIV 126—127.
Job de stellarum nominibus II 256.
Jœstelius, Melchior, VIII 162, 183, 336, 457, XIV 191, 194, 238, prosthaphæresin excoluit I xxxii, problemata de triangulis I 297 sqq., 318 sqq., VIII 201, judicium ejus de Urso VIII 59, eclipsin Solis anni 1598 observavit XIII 119, epistolæ Tycho nis ad eum VIII 278—280, 363—364, 381—382, 391—393.
Johannes, dux Holsatiæ, VII 185, IX 345.
Johannes, princeps, horoscopus ejus I 253—280.
Johannes de Antverpia, pictor, V 31.
Johannes, varii, IX 345 sq., XII 411, XIV 44—45; vid. Aurifaber, Michaelides, Pontanus.
Johannes, Hamburgensis, VIII 183.
Johannes Adolphus, dux Holsatiæ, VIII 89, 94, 378.
Johannes Albertus, dux Meckelburgensis, XIV 116, 136.
Johannes Antonius VII 371.
Johannes Casimirus, dux Palatinus, VI 62.
Johannes Franciscus, Ripensis, VII 35, 54 sq., 82, VIII 456, IX 322, poema ejus ad Tycho nem I 5, epitaphium a Tycho ne confectum IX 178.
Johannes Georgius, elector Saxonie, Christinæ Barbaræ aditum aperit XIV 307—308.
Johannes Olai, secretarius, XIV 105.
Johannes Thomæ VII 5.
Jonas, coquus, IX 346.
Jonas Jacobi IX 346, XIV 75, 80, 83, 86 sqq.; epigrammata ejus ad Tycho nem IX 217—218.

- Jordanus* (Bruno) Nullanus de mundi natura VI 135 sq., 357 sq.
- Josephus* I 147 sq., II 314, III 230, 232, 293, 315, V 5, VIII 411; de face supra Hierosolyma conspecta II 327, 374, IV 213.
- Josva* inhibitionem solaris cursus impetravit I 16, II 317, III 89, 97, 139.
- Isaacus*, Hollandus, VI 146.
- Isaacus Olai* IX 346.
- Isaacus Petri* VIII 91, IX 346.
- Islandiæ* sedis episcopalis septentrionalis latitudo et longitudo V 312.
- de *l'Isle* observationes Tychonis transscripsit X ix.
- Ivarus*, Hemmetensis, IX 346, XIV 45.
- Julianus Cæsar* VII 16.
- Junius*, Franciscus, VII 235.
- Junius*, Petrus (Peter Young) II 11, 442, VI 269, VII 307 sq., 336, 362, 364 sqq., VIII 457, IX 346, epistola ejus ad Tychonem VII 354, epistolæ Tychonis ad eum VII 110, 282—283, 330—332, 344, 353, 355—356.
- Jupiter*, vera ejus magnitudo II 425, latitudo V 263—268, VIII 196 sq., conjunctio cum Saturno a. 1563 I 156, III 164, IV 404, 410, V 106 sq., observationes X 3 sqq., 45 sqq., 105, 164—168, 172—174, 250—264, 314—323, 382—389, 392—395, 403—416, XI 53—63, 173—177, 271—274, 328—330, XII 39—43, 134—138, 214—219, 276—281, 338—346, 428—440, XIII 32—43, 90—95, 106—109, 139—141, 172—178, 213—219, 265—270.
- Kaas*, Nicolaus, cancellarius VI 119, 147, 229, VII 26, VIII 457 sq., IX 346, XIV 40, 41, 49, 57, 61; carmen Tychonis ad eum IX 180—187.
- Katzenelnbogii* latitudo et longitudo V 312.
- Keiserbergæ* latitudo et longitudo V 312.
- Kepler*, Johannes, VIII 458, XIV 206 sq., 238; Copernicum divitiarum suarum ignarum dixit I viii, de astrologia I xv, Prodromum dissertationum cosmographicarum scripsit VIII 14, 44, 53, 208, Tychonis Progyrnasmatum librum primum edidit II 440, III 406 sq., contra Ursum scripsit I xlii, VIII 343, contra Craigum IV 522, VIII 343, observationes et inventiones Tychonis publicaturum se non esse promittit VIII 296, a Tychone commendatur VIII 324—325, observationes ejus ad Tychonem missæ XIII 246—252, epistolæ ejus ad Tychonem VIII 14—15, 141—144, 305—307, 383—385, ad Herwartum VIII 354—357, ad Tengnaglium XIV 280—281, ad Georgium Brahe XIV 294, 297, epistolæ Tychonis ad eum VIII 44—48, 203—211, 246—247, 340—344, relatio ejus de morte Tychonis XIII 283, contractus cum Tengnaglio de edendis tabulis Rudolphinis XIV 256—257, edidit tabulas Rudolphinas XIV 287 sqq., observationum Tychonis thesaurus ei obvenit X i sqq., XIV 268—270, quartam inæqualitatem Lunæ invenit I lmi.
- Kepler*, Ludovicus, observationes Tychonis vendidit X iv sq.
- Kett*, Guilihelmus, IX 346.
- Kietzius*, Georgius, VII 318.
- Kindler*, Jacobus, chymicus, VIII 221.
- Kitzningii* latitudo et longitudo V 312.
- Knockert*, Franciscus, senator Lubecensis, VII 122, 124.
- Knopper* (Knoppert), Albertus, professor juris Hafniensis I 171.
- Knudstrupii* latitudo et longitudo V 312.
- Kolonitz*, Seyfridt, VIII 330.
- Kotte*, Metta, uxor Johannis Mulæi, XIV 152.
- Krabbe*, Tago, VII 165.
- Krabben*, Johannes, VIII 295, 458.
- Kragius*, Andreas, medicus, VII 241, 309, 364, VIII 458, IX 346, XIV 77, 84 sqq., 95.
- Kragius*, Nicolaus, regius historicus, VII 241, 353, 364, VIII 4, 10, 16, 18, 22, 66 sqq., 75, 78, 89, 113, 125, 180,

- 186, 291, 333, 458, IX 346, XIV 56, 71, 77, 79, 83 sqq.; epistola ejus ad Tychonem VIII 211—215, epistolæ Tychonis ad eum VIII 92—100, 127—131, 272—278, carmen Tychonis in librum ejus de re publica Lacedæmoniorum IX 193.
- Krol*, Jacobus, IX 346.
- Kullen*, fundus Scaniæ, Tychoni conceditur, XIV 6, 13, 21, ignem in promontorio sustinere jubetur XIV 6—7, 13, 22, 23, 25—26, 28—29, 50.
- Lago*, colonus, XIV 70.
- Landestri* latitudo et longitudo V 312.
- Landshuti* latitudo et longitudo V 309.
- Landskroniæ* latitudo et longitudo V 309, 312.
- Lange*, Christiernus, VIII 25, 27, 50, 458.
- Lange*, Ericus, VI 179, 361, VII 75, 110, 149, 200, 300, 321 sq., 387, VIII 24 sq., 52, 125, 128, 180, 210, 369, 458, IX 179, 193 sqq., 322 sq., 346, XIV 106 sq., 157 sqq., 180 sq., 198; carmen Tychonis ad eum XV 3—5.
- Lange*, Johannes, VIII 50.
- Langebek*, Jacobus, observationibus Tychonis usus est X x.
- Langrenus*, vid. Florentius, Jacobus.
- Laubimvolffius*, Georgius, mechanicus, VII 42, 56.
- Laubingæ* latitudo et longitudo V 310.
- Laugingæ* latitudo et longitudo V 312.
- Lavinus*, Wenceslaus, VIII 268.
- Laurensberg*, Wilhelmus, XIII 127.
- Laurentius*, magister, VII 50, 54 sqq.
- Laurentius*, pastor, IX 346.
- Laurentius Benedicti*, typographus, I 72, IX 344.
- Laurentius Isacii*, IX 346.
- Laurentius Nicolai* IX 346.
- Lausannæ* latitudo et longitudo V 312.
- Lehmann*, Casparus, scalptor gemmarum, VIII 50, 72; epistola ejus ad Rollenhagium VIII 73.
- Lehmann*, Zacharias, typographus, VIII 364, 392.
- Leovitius*, Cyprianus, VII 6, 57, VIII 202, 207, 305, 312, 458; stellam novam tempore Ottonis primi imperatoris et aliam anno 1264 apparuisse commemorat II 328, 454, III 46, 219, observationes de nova stella III 218 sqq., de prædictionibus ejus III 223 sq.
- Levi ben Gerson* radium descripsit I ix, V 320, 322, divisionem arcus circuli per lineas transversas invenit I xxiv, V 320.
- Levinus a Schullenburg* VIII 51.
- Lichtenbergius*, Johannes, vaticinia edidit III 290, 405.
- Liddelius*, Duncan, IV 516, VI 321, 374, VII 175, 193, VIII 458, IX 346; de Wittichio IV 455, systema Tychonicum se invenisse contendit V 323, VI 374, VII 325, VIII 37 sqq., 57, 185 sq., 205 sq., 213, 291 sq., 431 sq.
- Lilius*, Aloisius, mathematicus, calendarium Gregorianum instituit V 179 sq., 328, VII 87, 382, VIII 458.
- Lindanus*, Guilelmus, episcopus, VIII 458; Hagæcium impugnavit VII 247 sq.
- Lindauer*, Bernhardus, stellam novam d. 7 Novembris visam esse dicit II 453.
- Lindenow*, Christina, epistola Tychonis ad eam XIV 190—191.
- Lindenow*, Johannes, IX 346, XIV 9, 14, 19.
- Lindenow*, Otto, VIII 23, 90, 458.
- Linert*, magister, IX 346.
- Lipsiæ* poli altitudo III 144 sqq., V 309, 312, longitudo V 309, 312.
- Lisbonæ* latitudo et longitudo V 310, 312.
- Læser*, Johannes, VIII 163, 458.
- Londini* latitudo et longitudo V 310, 312.
- Longbergæ* latitudo et longitudo V 312.
- Longicampianus*, i. e. Longomontanus, VIII 405.
- Longomontanus*, Christianus, VIII 115, 132, 320, 323, 458, IX 346, XIV 146 sq., 212 sq., 238; a Tychone jus-

- sus est Craigum refutare IV 522, VIII 134, 150, testimonia Tyconis VII 384, VIII 335, Vratislaviam se contulit VIII 29, in Daniam missus VIII 239 sq., 360, 377 sq., 380, 405, eclipses Solis et Lunæ annorum 1598 et 1599 observavit XIII 119, 127, 160, 163—164, Tyconis epistolæ ad eum VIII 34—35, 133—134, 136, 149—151, 158—159, 182—184, systema Tyconicum recepit I XLII, stellas tantum 777 in Astronomiam Danicam recepit I XLVI, theoriæ lunari finem imposuit I LIII, II 446, III 321, 406 sq., latitudines et longitudes urbium determinavit V 311—313.
- Lovanii* poli altitudo III 74, 395, IV 114, V 310, longitudo V 310.
- Lubecæ* latitudo et longitudo V 310, 312.
- Lucas*, magister, VII 44.
- Lucernæ* latitudo et longitudo V 312.
- Luck*, Simon, VIII 266.
- Lucretius* de Solis et Lunæ magnitudine IV 152 sqq.
- Ludolphus*, magister, IX 346.
- Lugduni* latitudo et longitudo V 310.
- Lugduni Batavorum* latitudo et longitudo V 310, 312.
- Lullius*, Raymundus, VI 146.
- Lummisdal*, Gulielmus, VII 21 sq.
- Luna*, simplices motus ejus, II 99, tabula æquationis temporis II 102, tabulæ motuum II 103—116, VIII 346, præcepta de supputatione longitudinis II 117, geometrica longitudinis demonstratio II 119 sqq., inæqualitates lunares I LI, V 111 sq., evectio I LI, prosneusis Ptolemæi I LII, theoria Copernici I LII, Tyconis I LII, II 98 sqq., 446, V 111 sq., variatio I LIII, II 101, V 328, VII 370, quarta inæqualitas I LIII, II 101 sq., V 328, VIII 150, 161, 345, 447 sq., tabulæ latitudinis II 124 sq., exempla usus earum II 126, reductio ad Eclipticam II 129 sq., latitudinis maximæ sive inclinationis orbitæ variatio I LIV, II 121 sqq., 413, 447, IV 42 sq., VI 170, VII 142 sq., 151 sqq., 159, 167, 171, VIII 161, 173 sqq., 395 sq., XI 162 sq., XII 378, 399—400, inæqualitas motus nodorum I LIV, II 122, 128 sqq., 447, XII 394, Lunæ parallaxis et distantia a Terra II 130, tabula parallaxium II 132 sqq., refractio II 136, diameter Lunæ in eclipsibus vi luminis solaris extenuatur II 147, V 183, tabula semidiametrorum Lunæ et Solis II 148, nova determinatio parallaxeos II 411 sqq., VIII 345, XI 145 sq., 157 sq., 325, distantia a Terra II 388, 423, 458, IV 155, 260, 387, vera magnitudo secundum Ptolemæum et Copernicum II 415 sq., V 171, secundum Tyconem I 151, IV 153, V 171, lumen a Sole mutuatur III 256, V 169, effectus ejus in res terrestres I 155, V 172, Lunæ observationes X 5, 7, 12, 17, 23—26, 29, 42, 53, 58 sqq., 64 sq., 76, 81 sqq., 89 sq., 94 sqq., 138—152, 239—242, 302—314, 363—381, XI 19—47, 141—165, 254—267, 325—326, XII 16—29, 118—126, 188—211, 270—271, 316—331, 374—419, XIII 5—24, 79—82, eclipses Lunæ a Tycone observatæ II 98, 446, V 111, ratio eclipsium ex Solis tabulis supputandarum II 137 sqq., eclipses Lunæ annorum 1565, 1566, 1567 X 13, a. 1570 X 26, a. 1573 I 45 sqq., 131 sq., 312, II 63, X 38—39, astrologicum iudicium de ea I 58—64, a. 1576 X 42, a. 1577 X 46—48, 50, a. 1578 X 61—63, a. 1580 VII 57, X 81—83, a. 1581 VI 142, VIII 150, X 94—99, a. 1584 VI 57, 100 sq., 116, 141, VII 88, X 307—314, a. 1587 VI 142, XI 163—165, a. 1588 VI 142, XI 257—264, a. 1589 V 303, a. 1590 XII 21—25, a. 1591 VI 296, 299 sq., 370, VII 334, XII 123, a. 1592 XII 195—197, 210—211, a. 1594 XII 317—319, a. 1595 XII 389—392, 407, a. 1596 XIII 15—19, a. 1598 V 182sqq., VIII 54 sq., 124, XIII 124—129, 129—131, a. 1599 VIII 150, XIII 162—164, a. 1600 VIII 247, XIII 201—202, a. 1601 II 141 sqq.

- Lundæ* latitudo et longitudo V 309, 312.
- Lundense beneficium* clericum Tycho ni promittitur XIV 31.
- Lunenburgi* latitudo et longitudo V 309, 312.
- Lunge*, Ove, IX 346.
- Luscovius*, Marcus, VIII 405.
- Lutetia* vid. Parisii.
- Lutherus*, Martinus, I xxxvii, VII 86; ejus natalitium III 290.
- Lutzenburgi* latitudo et longitudo V 312.
- Lycosthenes* de ostentis VII 143, 155, VIII 458.
- Lydyat*, Thomas, I xxxix.
- Lykke*, Christina, IX 344.
- Lymvigæ* latitudo et longitudo V 312.
- Lyra* inter astra collocata IV 48 sq.
- Machabæus* VII 56.
- Mænius*, M., professor Regiomontanus, VI 103.
- Mæstlin*, Michael, VIII 458 sq.; de inventis Tycho nis I LVIII, librum scripsit de nova stella III 58—62, VII 14, prima Novembris hebdomada primum eam apparuisse dicit II 453, loca stellarum quibus usus est III 65, de cometa anni 1577 IV 207—238, 289 sqq., 424 sqq., 445 sqq., 460, VII 48, 50, 52, 104, 112, loca stellarum quibus usus est IV 217 sq., de cometa anni 1580 IV 223, VI 142 sq., XI 309 sq., eclipses ab eo observatæ VIII 210, aliæ ejus observationes VI 296 sqq., 370 sq., a Craigo oppugnatur VI 324, 327 sq., judicium Hagecii de eo VII 146 sq., 247, 251, a Tycho ne contra Hagecium defenditur VII 205 sqq., calendarium Gregorianum oppugnavit V 150, 328, VII 82, 86, 381 sq., epistolæ ejus ad Wolfium VII 50, epistola Tycho nis ad eum VIII 52—55.
- Magdeburgense capitulum* instrumentis Tycho nis viam per Albim aperit XIV 209—210, epistola Tycho nis ad id XIV 195, 211—212.
- Magdeburgi* latitudo et longitudo V 309, 312.
- Maginus*, Johannes Antonius, VII 278 sqq., 305 sq., VIII 206, 459, Martem observavit XII 147—150, inæqualitatem ejus invenit I LV, V 126, tabula ejus tetragonica V 127, 325, aliæ tabulæ VII 100, VIII 400, ephemerides VIII 396, epistolæ ejus ad Tycho nem V 125—128, VII 303—304, 315 sqq., VIII 190—191, 250—254, 399—401, epistolæ Tycho nis ad eum VII 289—299, VIII 120—125, 229—232, 394—398.
- Magnitudines veræ Solis*, Lunæ, planetarum, stellarum fixarum, novæ stellæ II 415 sqq.
- Magnus* vid. Bartholinus, Magnus.
- Magorum stella*, vid. Stella magorum.
- Major*, Johannes, VII 20, VIII 459; de nova stella VII 13, epistolæ ejus ad Tycho nem VII 13—14, 35—36, 46—47, 83—85, epistolæ Tycho nis ad eum VII 86—87.
- Malmogiæ* latitudo et longitudo V 309.
- Manilius*, poeta, V 9, VII 21, VIII 230, IX 149, XIV 99; carmen ejus a Scalligero editum VIII 264, 329.
- Mansfeldii* latitudo et longitudo V 312.
- Mantua* latitudo et longitudo V 312.
- Marienburgi* latitudo et longitudo V 312.
- Marinus*, Claudius, bibliopola, VIII 153, 318, 459.
- Marius*, Simon, VIII 459; systema Tycho nicum se invenisse contendit V 323.
- Marnix*, Philippus, VIII 90, 99, 459.
- Marpurgi* latitudo et longitudo V 309, 312, VI 38, 349.
- Marrine* IX 346.
- Mars*, vera ejus magnitudo II 425, mutationem eccentricitatis ejus Tycho et Maginus invenerunt I LV, V 126, VI 236, 239, 336, 366 sq., VII 292, latitudo V 269—274, VIII 196, XII 305—310, tabula latitudinis V 275,

- 334, calculi de motu Martis V 276—288, tabula de oppositione Martis V 289, parallaxis et distantia a Terra I XL, II 383, III 173, 398, IV 475, VI 70, 86, 179, VII 129, 199, 246, 294, X 201—203, 283—288, XI 185 sqq., annis 1529 et 1593 solito major visus III 258, scintillat nonnumquam III 237, observationes VII 359, 369, X 3 sqq., 45 sqq., 71 sqq., 84 sqq., 104 sqq., 174—178, 196—201, 242—251, 321—323, 382—402, XI 63—66, 177—188, 275—276, 330—336, XII 44—46, 138—152, 219—221, 282—299, 346—348, 441—460, XIII 43—48, 109—113, 142—145, 178—181, 219—227, 270.
- Marsiliæ* latitudo et longitudo V 310, 312.
- Martinus*, ædituus, IX 346, XIV 188.
- Martinus Bartholini* XIV 98.
- Mathematicæ scientiæ* I 145 sqq.
- Matthias*, archidux, postea imperator, VIII 319, 330 sq., 381, XIV 206; epistolæ ejus ad cameram Bohemicam XIV 271—272, 275—276, ad præfectum ærarii Bohemici XIV 274, ad Tychonis heredes XIV 276—278, epistola Tychonis ad eum VIII 307—309.
- Matthias*, scriba, IX 346.
- Matthias*, secretarius proregis Portugaliæ, VII 301.
- Matthias*, studiosus, vid. Seiffart.
- Matthias Georgii*, epistola ejus ad Tychonem XIV 97—98.
- Maul*, Nicolaus, VIII 407.
- Mauritius*, landgravius Hassiæ, VI 298 sq., 301, 303, 372 sq., VIII 21, 459; epistola ejus ad Tychonem VI 311—313, epistolæ Tychonis ad eum VI 10—18, 307—310, 313—314, 337—340, VIII 387—388, XIV 106—108, carmen VI 312 sq., VII 333.
- Mauritius*, princeps Hollandiæ, VIII 82, 95, 98.
- Maurolycus*, Franciscus, VII 82, 86, 407; de prima apparitione novæ stellæ II 453.
- Maximilianus*, archidux, VII 215, 329, VIII 277.
- Maximilianus*, dux Bavarïæ, VIII 162.
- Mayer*, Tobias, I LIV.
- Mechanica* vid. Astronomiæ instauratæ mechanica.
- Mechelinïæ* latitudo et longitudo V 310.
- Mecker* VIII 282, 317.
- Medicamentorum compositiones* VII 5, VIII 372 sq., IX 159—169.
- Mediolani* latitudo et longitudo V 310.
- Megabacchus* VIII 420.
- Melanchthon*, Philippus, VIII 129, 132; Ptolemæi Tetrabiblon in Latinum vertit I xiv, de systemate Copernici I xxxvii, præceptor Davidis Chytræi III 225, de proportione elementorum VI 151, de distantia Solis a Terra imminuta VI 160, 348.
- Melissus*, Paulus, poeta, VII 278, VIII 116, 194, 333, 338, 358, 379, 391, 459, XIV 172; epistola ejus ad Tychonem VIII 267—268, epistola Tychonis ad eum VIII 248—250.
- Memmius*, Petrus, medicus Lubecensis, VII 124.
- Menelaus* stellam in fronte Scorpii observavit II 246, ab eo stellarum fixarum longitudes Ptolemæum sumpsisse putaverunt quidam III 411.
- Menhardus*, Johannes, VIII 300.
- Menius*, Petrus, VII 82.
- Menzelius*, Philippus, VIII 353.
- Meragha*, magnum observatorium I xvi, xx.
- Mercator*, Gerhardus, VIII 270, 281, 322, 459.
- Mercurii* imago VI 261, 287.
- Mercurius* a Copernico non observatus II 89, V 109, 323, observatus a Tychone II 89, V 109, 135, VIII 208, vera magnitudo II 424, parallaxis XII 162, maxima digressio a Sole XII 162, observationes X 4, 40, 43, 45 sq., 76 sq., 105 sq., 163—167, 249—250, 315, 411—412, 414—415, XI 76—88, 203—206, 293, 338—339, XII 72—74, 156—161, 224—226, 302, 475—

- 481, XIII 55—59, 95—98, 234—235, 273.
- Meridiani* directio a Tychoe definita I xxvii sq., methodus III 38.
- Messala*, Arabs, de cometis III 27, IV 213.
- Messanæ* latitudo et longitudo V 312.
- Metallorum* natura VII 235, 237.
- Metellanus* sive *Metellus*, Johannes, cancellarius Scotiæ, VII 331, 333, VIII 459, IX 156 sq.; epistola ejus ad Tychonem VII 336—337, epistolæ Tychonis ad eum VII 307—308, 338—341.
- Methodius*, episcopus, VIII 393, 459.
- Metii* latitudo et longitudo V 309.
- Meton* VIII 87, 104 sq.
- Metta*, uxor Andreæ Velleji, VII 77, 98, 219.
- Meyer*, Andreas, præfectus ærarii Meckelburgensis, XIV 117, 216, 219, 224, 226 sqq.; epistolæ Tychonis ad eum XIV 135—136, 149—150, 213—214, 222, 225—226.
- Michael*, chirurgus, VIII 215, IX 346.
- Michael*, Germanus, IX 346.
- Michaelides* (Michaelius), Johannes, VIII 213, 276, 459, XIV 76, 79.
- Middelburgi* latitudo et longitudo V 312.
- Middelstorp*, Wichmannus, VIII 219.
- Milichius*, Plinii interpres, I 17, II 323, 454, III 98.
- Minckvitz*, Ernfridus, VIII 371, XIII 283, XIV 203, 250, 267; epistola Tychonis ad eum XIV 202.
- Misniæ* latitudo et longitudo V 309, 312.
- Mogasterus*, Hieronymus, IX 346.
- Moguntiaci* latitudo et longitudo V 309, 312.
- Moletrina chartaria* Tychonis VI 183, 198, 224, 365, VII 214, 219, 222, 274 sq.
- Moller* (Mueller), Henricus, VII 235.
- Moller* (Mueller), Johannes, mathematicus Brandenburgensis, VIII 34, 65, 179, 182, 240, 459, XIV 135, 191; pecuniam a Tychoe se accepisse testatur XIV 222—223.
- Moller*, Tobias, VII 116 sqq.
- Moller*, Vincentius, consul Hamburgensis, VIII 28, 30, 340, 459, XIV 173; epistola ejus ad Tychonem XIV 156, epistola Tychonis ad eum XIV 201.
- Momme*, Henricus, IX 346.
- Monachii* latitudo et longitudo V 309, 312.
- Monasterii* latitudo et longitudo V 310, 312.
- Monavius*, Jacobus, VII 371, VIII 49, 77, 116, 459; ad Scultetum de Tychonis libro de cometa anni 1577 VI 317, 374, epistolæ ejus ad Tychonem VIII 28—31, 265—267, 325—326, epistolæ Tychonis ad eum VIII 236—237, 320—321.
- Monculmius*, Antonius, VII 16.
- Montis Pessulani* latitudo et longitudo V 310, 312.
- Morsburgi* latitudo et longitudo V 312.
- Morsianus*, Christiernus, VII 21, VIII 459.
- Moses* I 154, 162, VI 159, 177, 185, 195, VIII 411 sq.
- Motus* stellarum directus non admittitur III 78.
- Muehlstein*, Casparus, capitaneus Brandeisensis, VIII 167 sq., 171, 178, 193, 273, 370; epistola ejus ad collegium ærarii XIV 165—166.
- Mueller* vid. *Moller* et *Muller*.
- Mufetus*, Thomas, VII 75, VIII 459.
- Mulæus*, Bartholdus Ivvari, VIII 184 sq., 459.
- Mulæus*, Claudius, VIII 74, 77 sq., 88, 91 sq., 97, 115, 127, 166, 179, 182, 212, 275, 337, 460, XIV 146 sq., 152 sq., 210, 212.
- Mulæus*, Janus, VIII 60, 460, IX 346.
- Mulæus*, Laurentius, VIII 215, IX 346.
- Mulæus*, Nicolaus, IX 346.
- Mulæus*, Pascolius(?), XIV 123.
- Muller*, Valentinus, auriga, VIII 146.
- Munck*, Petrus, IX 346, XIV 40, 41, 49, 103.
- Munosius*, Hieronymus, VII 165, VIII 460, observationes novæ stellæ II 408 sq., III 21, libellus de eadem III 80—86, 395, VII 212, 224, 251, 270, d. 2 Novembris nondum eam ap-

- paruisse contendit II 453, III 81, 235, distantiam ejus a tribus Cassiopeæ stellis determinavit III 81, nullam ejus parallaxin invenit III 85, IV 470, cometam eam esse opinatus est III 85, 242, epistolæ ejus ad Hagecium III 82, VII 400—403, ad Reisacherum VII 395—397.
- Mutationes aeris* annorum 1582—1597 IX 1—146.
- Myliander*, typographus, VII 88, 345.
- Mylius*, Martinus, VIII 460; epistola ejus ad Hagecium VII 183, epigramma VII 327, IX 216—217.
- Mylius*, doctor theologiæ Augustanus, VII 84.
- Myllner*, Johannes, VIII 326.
- Narbonæ* latitudo et longitudo V 312.
- Nasir-ed-din* I xvi.
- Nassoviæ* latitudo et longitudo V 312.
- Neapolis* latitudo et longitudo V 310, 312.
- Nereides* II 313.
- Nestvedæ* poli altitudo V 304, 309, longitudo V 309.
- Newton*, Isaacus, I xli, liv.
- Nicephorus* II 324.
- Nicolaus*, varii discipuli Tychonis, IX 346, XIV 44—45.
- Nicolaus*, magister, VIII 238, Coldingensis XIV 56.
- Nicolaus*, sartor, IX 346.
- Nicolaus Severini* IX 346.
- Nicolsonius*, Thomas, VII 192.
- Nidrosia* vid. *Dronthemium*.
- Nitzwitz*, Baldassar, IX 346.
- Nolthius*, Andreas, VIII 460, de nova stella III 34, 263—279, 288, de cometa anni 1577 IV 213, 337—348, 459 sqq.
- Nonius*, Petrus, methodum invenit arcum circuli dividendi I xxiii, III 185, IV 372, V 13 sqq., VI 284, VII 260 sq., de Spicæ observationibus Werneri et Copernici II 224, de crepusculis III 246, IV 327, VI 112.
- Nordfjord*, beneficium Tychonis Norvegicum, VIII 175, XIII 101, XIV 7—8, 11, 14—16, 19, 32, 34, 36, 48, 49, 54, 100 sq., 120, 128, 139.
- Noribergæ* poli altitudo II 38 sq., III 224, V 309, 312, longitudo II 42, V 309, 312.
- Nova stella* vid. *Stella nova*.
- Nycopiæ Cimbricæ* poli altitudo V 304, 309, 312, longitudo V 309, 312.
- Obliquitas Eclipticæ* I xxviii, II 18, 26, 58, 442 sq., IV 23, 33 sq., 69, 186, 499, 504, V 111, VI 39, 77, 87, 352, VIII 195, variatio ejus a Ptolemæi tempore ad tempus Tychonis I xlvi, II 86, VI 72, 94, 354, VII 115, 279 sq., VIII 103, 197, inter Ptolemæum et Albategnium III 336, Copernici opinio de variatione per 3434 annos II 86, 445, III 78, 395, V 131, VII 405, Rothmanni opinio II 247, VI 54 sq., 110 sq., tabula declinationis Eclipticæ II 66—71, calculi V 228 sq.
- Obscuratio Solis* vid. *Sol*.
- Observationes Tychonis*, juveniles I ix, accuratio observationum I xxvi, IV 499, earum fata X i sqq., XIV 248 sq., 268 sqq., observationum libri nitide descripti V 109, 135, 323, codicum descriptio X xii sqq., thesaurus observationum X—XIII.
- Observatoria astronomica* I xvi; vid. *Stellæburgum*, *Uraniburgum*.
- Occultationes stellarum* per Lunam a Tycho observatæ II 245, 451.
- Odoacer* VIII 417.
- Œniponti* latitudo et longitudo V 312.
- Œstwaldus* vid. *Oswaldus*.
- Offusius*, Iofrancus, de distantia Solis II 421, 460.
- Olaus Stigii* XIV 76.
- Oppositio Jovis et Saturni* a. 1574 III 164.
- Optica* I 146, II 76, III 246.
- Oratio* de disciplinis mathematicis I 145—173.
- Orbes* in cælo nulli sunt reales aut solidi I xxxv, II 419, III 78, 90—91, 111, 151, IV 159, 222 sqq., 427, 474 sq., VI 88, 140, 148, 187, VII 130 sqq., 163, 229, 260, 267, 293 sq., VIII 45, 206, 208.

- Origanus*, David, VIII 253 sq., 396, 460.
- Orix*, animal, vid. Rix.
- Orpheus* de stellarum nominibus II 256.
- Ortelius*, Abrahamus, Theatrum orbis terrarum edidit IV 437, VII 179, VIII 116, 460.
- Osenbrugii* latitudo et longitudo V 312.
- Osterwicii* latitudo et longitudo V 312.
- Oswaldus*, Johannes, VII 127, VIII 279, 363, 381; epistola ejus ad Tychohem VIII 336.
- Otho*, Valentinus, VIII 174, 460.
- Otte*, Helsingorensis, IX 346.
- Oththoniæ* poli altitudo V 304, 309, 312, longitudo V 309, 312.
- Otto*, dux Brunsvicensis, VIII 31, 339; epistola Tychonis ad eum VIII 366—367.
- Otto*, Islandus, VII 367, IX 346, XIV 44.
- Ovidius* poeta de septima stella Pleiadum III 257.
- Oxonia*, Ingera, uxor Georgii Brahe V 106.
- Oxonii* latitudo et longitudo V 310.
- Oxonius*, Albertus, XIV 186.
- Oxonius*, Petrus, regni aulæ magister, III 95, V 106, VII 21.
- Pagninus*, Sanctes, VII 234 sq.
- Palingenius*, Marcellus, de poetis III 289.
- Paludanus*, Johannes, IX 346.
- Paludius*, Johannes, VIII 326.
- Panormi* latitudo et longitudo V 312.
- Pantz*, Johannes, IX 346.
- Paracelsus*, Theophrastus, de chemiæ principiis I xi, III 307, VI 146, 167, VII 169 sq., de metallis VII 235, VIII 221 sq., de podagra VI 224, de penatibus superis III 293, IV 383, de cometis IV 382 sq., de meteoris VII 156, de cælo VII 230.
- Parallaticum instrumentum* II 153, III 150 sq., 156, IV 464, V 44—47, VI 251, 263, aliud V 48—51, VI 104, 252, 260, 264 sq., 283 sq.
- Parallaxis*, ratio inquirendi secundum Regiomontanum III 176, problemata Diggesæi et Hagecii III 34 sq., 177 sqq., ratio Tychonis II 139 sqq., parallaxis Solis I xxix sq., xl, II 16, 82 sqq., 383, 445, tabula II 65, Lunæ II 130—134, 383 sqq., 411 sqq., VIII 345, Saturni II 383, 389, Martis I xl, II 383, III 173, 398, Veneris I xxx sq., XII 52, 60, novæ stellæ nulla II 382, 393 sqq., 401—406, III 5—112, secundum aliorum opiniones exigua III 113, 117, 121, 123, 187, cometæ anni 1577 IV 94, 187 sqq., 212, 279, 387, 445, Craigi opiniones IV 433, 483 sqq., VII 181, parallaxis annua planetarum secundum Copernicum III 197.
- Parcovius*, Franciscus, VIII 185 sq.
- Parisiorum* latitudo et longitudo V 310, 312.
- Parmenides*, I xxxvii, VII 134.
- Parsberg* (Passberg), Manderup, XIV 49, 79, 240, 243 sqq.
- Parsberg*, Nicolaus, cubicularius, VII 26, XIV 35, 55, 57.
- Passoviæ* latitudo et longitudo V 309.
- Patavii* latitudo et longitudo V 310, 312.
- Patritius*, Franciscus, VIII 206, 460.
- Paulus*, pharmacopola, IX 346.
- Paulus Eliæ*, judex Bergensis XIV 130.
- Paulus Martini* XIV 76.
- Paulus Matthiæ*, rector universitatis Hafniensis, epistola Tychonis ad eum XIV 50—51.
- Paysen*, Petrus, VII 193.
- Pegelius*, Rostochiensis, eclipsin Solis anni 1590 observavit XII 10.
- Pena*, Johannes, de natura ætheris et aeris II 77, III 154 sq., VI 135, 187, 320, VII 121, 147, 172, 212, 230, 251, VIII 460.
- Pepler*, Christophorus, VIII 60, 74, 91, 460, XIV 54, 67, 130.
- Pererius* in Genesin VIII 63.
- Peripatetici* vid. Aristoteles.
- Perlachius*, Andreas, de inusitato lumine Martis III 258.

- Perseus* II 313 sq.
Pes Tychonis V 319.
Peters, C. A. F., de Tychonis accuratone observandi I xxvi.
Petkum, Simon, Hamburgensis, VIII 369, 416, 460, XIV 156, 200 sq.; epistola ejus ad Tychonem XIV 172—174, epistola Tychonis ad eum XIV 196—198.
Petrus, varii discipuli Tychonis, IX 346.
Petrus, colonus, XIV 70.
Petrus, tabellarius, VII 17 sqq., 46 sq., 51.
Petrus Antonius (Lazarus) VIII 29, 458.
Petrus Cimber IX 346.
Petrus Francisci VIII 214, IX 346, XIV 76, 80, 87.
Petrus Jacobi Flemlæse IV 512, VI 349 sq., IX 346, XIV 44; cometam anni 1580 observavit XIII 315, in Norvegia observationes instituit V 342, X 59, 69, 101 sqq., 107, 124, XI 143 sqq., 164, Cassellas missus VI 40, 58, canonicatus Roskildensis ei conceditur XIV 11—12.
Petrus Nicolai XIV 81, 83.
Petrus Severini, medicus, VIII 460; epistolæ Tychonis ad eum VII 38—40, 47, inimicus Tychonis VIII 21, XIV 144.
Peucer, Casparus, I 173, VI 21, 190, 193, VII 387, 389, VIII 129, 132, 460; de systemate Tychonico IV 474, VI 187, VII 125 sqq., Craigum docuit IV 480, epistolæ ejus ad Wolfium de nova stella III 49 sq., VII 13, ad Hassiæ landgravium III 120—123, ad Tychonem VII 184—191, ad Hagecium VII 357—358, epistolæ Tychonis ad eum VII 127—141, 228—239.
Peucer, Casparus, minor, quæstionem proposuit de nova stella III 132—135.
Philippus VIII 77.
Philippus, studiosus, IX 346.
Philo I 148, VII 16.
Picardus, Johannes, de insula Hvena I xvii, V 339 sq., observationes Tychonis edere instituit X vii.
Picolhomineus, Alexander, de stellis fixis cognoscendis III 260.
Picus, comes Mirandulæ, contra astrologos scripsit I 168.
Pinellius, Vincentius, V 130, VII 276, VIII 460; epistola Tychonis ad eum VIII 226—228.
Pinnacidia I xxiv sq., II 153, 333 sqq., 344, III 129, IV 373 sq., 453, V 25 sq., 154 sq., VI 35 sq., 55 sq., 90.
Pirckmannus, typographus, VII 37, 103.
Pisæ latitudo et longitudo V 310, 312.
Pisauri latitudo et longitudo V 312.
Pitiorodius IX 346.
Pitiscus, Bartholomæus, I 318 sq., VII 377.
Pittatus VII 298.
Planetæ cum corporis partibus comparantur I 157, VI 145, cum metallis VI 145, interdum scintillant II 375, non revolvuntur II 377, a Tychone observatæ, theoria eorum emendata V 114 sq., suo lumine lucere videntur V 170, VIII 160, 439, calculi de latitudine planetarum V 257—274, planetarum loca observata VI 84.
Planimetriæ compendium, opus falso Tychoni ascriptum, I 317.
Plantinus, typographus, VII 37, 105 sqq.
Plato I 146, II 456, IV 472, VII 134.
Plecius, Martinus, IX 346, carmen ejus ad Tychonem VI 9.
Pleiadum septima disparuisse dicitur II 320, III 257, VIII 189.
Plinius, de stella nova ab Hipparcho visa I 16 sqq., 310, II 321, III 25, 88, 94, 97, 107, 298, 301, 309, 335, IV 449, de cometis II 321, III 122, 160, 264, 295, 397, IV 357 sq., VII 144, de relatione umbræ ad gnomonem in urbe Roma V 132, de causa stationum et regressuum planetarum VII 24, 29, de Martis stella VII 131, 291, astrologica III 226.
Plutarchus I xxxvi.

- Podbusk*, Cladius, IX 346.
Polaris stella vid. *Stella polaris*.
Poli altitudo, ratio inquirendi II 16, 57, VI 39.
Polycarpus VIII 126, 130.
Pomerius, Joachimus, VII 277 sq., VIII 461.
Pontanus, Johannes Jovianus, de rebus cælestibus libri II 328, 455, III 51, de cometis VI 156, 360.
Pontanus, Johannes Isacii, VIII 461, IX 346; epistolæ ejus ad Tychonem VIII 20, XIV 204, epistolæ Tychonis ad eum VII 371—374, 377—379.
Portitores Helsingoræ XIV 23, 24, 29, 34—35, 38, 43, 63.
Pose, Georgius, VIII 214.
Posidonius I xiv; de nubium altitudine IV 327.
Postellus, Gulielmus, scriptum de nova stella III 229—233.
Posthius, Johannes, poeta, VIII 116.
Præcessio, a Tychone 51" æstimata I XLVI, II 35 sqq., 253 sqq., III 75, 109, 232, V 113, 170, VI 73, VIII 106, 198, 397, tabula pro annis 1400—1600 II 257, 1700—1800 II 280, ab Albategnio observata III 336, a Copernico III 337 sq., IV 291 sq., V 113, VI 73, præcessio Coperniana IV 216, 504, Alphonsina IV 499.
Prætorius, Johannes Joachimicus, I 319, III 150, VIII 39, 461; de cometa anni 1577 et de nova stella III 153—157, de cometa anni 1577 IV 225, 356—358, 463, VII 121.
Pragæ poli altitudo IV 108, V 185, 228 sq., 309, 312, VIII 183, X xxvi, XIII 161, 187, longitudo IV 108, 437, 487, 519, V 228, 309, 312, VII 179, X xxvi.
Pragensis archiepiscopus, epistola ejus ad Tychonem XIV 209.
Pratensis, Johannes, I 309, III 93 sqq., VIII 461; epistola ad Tychonem de nova stella I 6—8, responsio Tychonis I 9—15, aliæ ejus epistolæ ad Tychonem VII 7—8, 10—12, 23—24, 30—31, Tychonis epistolæ ad eum VII 9—10, 25—29, obitus ejus VII 32, 38 sq., epitaphium in eum VII 32, 39, IX 176—177.
Prendtl, Alexander, VIII 300.
Presburgi latitudo et longitudo V 309.
Privilegia Tychoni concessa II 8—11, V 119 sq., VII 122, 165, 183, 213, 217 sq., 222 sq., 225, 255 sq., 262, 282, 284, 288, 304, 331, 347 sq., 355, XIV 32—34, 66—67.
Proclus de cometa supra Jovem conspecto III 134, 139, 141, 152, ejus Hypotheses vel Hypotyposes VII 78, 85.
Progymnasmata vid. *Astronomiæ instauratæ progymnasmata*.
Prophatius, Judæus, V 229, 332.
Prosneusis I LII.
Prosthaphæresis I xxxii, 288, 290—292, 316—320, II 26—29, 49 sq., V 111.
Prugner, Nicolaus, VIII 366, 461.
Ptolemæus I v, xiii sq., xvii sqq., 149, V 5 sq., 173, Syntaxeos (*Almagesti*) ejus editiones I vii, de Solis apogæo et eccentricitate II 18, 28, de Solis distantia II 421, 459, theoriam Solis ab Hipparcho mutuatus est II 443, V 175, observationes ejus æquinoc-tiorum II 33 sq., 443, VIII 101 sq., 437, de præcessione æquinoc-tiorum VIII 85 sqq., secundam Lunæ inæqualitatem invenit I LI, prosneusis excogitavit I LII, de inclinatione orbitæ Lunæ I LIV, II 121, IV 42 sq., VIII 102, de Lunæ distantia II 388, 458, de Solis et Lunæ vera magnitudine II 415, de cometis III 163 sq., 264, liber de stellis fixis VIII 86, 103, catalogus stellarum I XLIII, II 151, 281, III 255, 335, 411, VI 115, 356, VII 163 sq., loca stellarum secundum eum II 237 sqq., V 113, instrumenta ejus II 152 sq., astrologica (*Tetrabiblos*) I xiv, 39, 41 sq., 61 sqq., 161, 164, 193 sqq.; cf. *Systema Ptolemaicum*.
Puehler de subdivisione instrumentorum V 320.
Purbachius, Georgius, I vi, xxi, xxxii; de quadrato geometrico V 21, 320, theoriæ planetarum VIII 293.

- Pyramides Ægyptiorum* III 147, V 5.
Pyronomica vid. *Spagyrica ars*.
Pythagoras I xxxvii, 147, VII 134, VIII 208.
Pythagorei de stellarum circumvolutione II 457, de sacro numero II 421, de novis stellis III 46, de cometis IV 382, numerorum proportionibus omnia includunt VI 269.
- Quadrantes*, Ptolemæi et Tychonis I xix sqq., ad definiendum tempus utiles I xxi, Quadrans magnus prope Augustam Vindelicorum constructus I x, 12, II 61, 342 sqq., 401, 456, III 10, 123, 200, IV 470, V 88—91, 108, 318, VI 91, VII 14 sq., 20, 47, 50, VIII 103, 202, XIV 236, Quadrans magnus chalybeus azimuthalis II 78, V 36—39, 92 sq., VI 258 sq., 279 sq., Quadrans maximus chalybeus V 36—39, 92 sq., Quadrans minor orichalcicus V 12—15, VI 261, 284 sq., Quadrans muralis I xxv, V 28—31, VI 254, 267 sq., nondum rectificatus X 135, Quadrans Nonianus V 121—124, Quadrans orichalcicus azimuthalis, IV 21, 33, 371 sqq., V 16—19, 318, VI 250 sq., 263, alius V 20—23, VI 251, 263, Quadrans volubilis V 32—35, VI 259, 280 sq., X 427.
- Quadratura circuli* VII 264.
Quinta essentia VI 135, 153, 181, 187, VII 143, 172, 409.
- Radenicius*, Joachimus, eclipsin Solis anni 1598 observavit XIII 119—120, eclipsin Lunæ ejusdem anni XIII 127.
- Radius astronomicus* II 331, 343, III 69, IV 33, 463 sq., V 6, 73, 97, 107, VI 17, 21, 175, 260, 285, VII 18, 74, 111 sq., 151; origo ejus I ix, V 320, 322, errorum discrimen inter observationes Diggesæi et Tychonis III 169, 184 sqq.
- Raimundus*, Hannibal, VIII 457; stellam novam circa principium Octobris visam esse affirmavit II 452, scriptum ejus de stella III 233—253, Hagecium impugnavit VII 247, ab eo impugnatus III 42, 247, de cometa anni 1577 IV 510, VII 204.
- Ramelius*, Henricus, VI 243, 247, VIII 89, 97sq., 112, 170, 179, 182, 461, IX 346; epistola ejus ad Sophiam Brahe XIV 155—156.
- Ramus*, Petrus, VIII 461; astronomiam niti non debere hypothesis opinatus est I viii, x, lvi, VI 88, 353, de quadrante magno II 346, 456, VII 47.
- Rangifer* vid. *Rix*.
- Rantzovius*, Anthonius, VIII 71.
Rantzovius, Bredo, XIV 49.
Rantzovius, Franciscus, VIII 113.
Rantzovius, Gerardus, VI 33, VII 89, 124, 126, 300, 328 sq., 384, VIII 61, 63, 461, IX 346, XIV 30.
Rantzovius, Henricus, VI 21, 190, VII 127, 135, 140 sq., 328, 333, VIII 63, 412, 461, IX 346; sedem Tychonis Wandesburgi dedit I ii, VIII 7 sq., IX 211, XIII 102, XIV 107, 119, ejus instrumenta III 129, bibliotheca VIII 11, epistola ejus ad Tychonem VI 29—30, epistolæ Tychonis ad eum VII 89—90, 101—102, 124—127, 242—243, 299—301, 347—348, 379—382, 383, 384—385, 385—389, VIII 5—6, XIV 124—125, medicamentorum compositiones a Tychone cum eo communicatæ IX 187—190, mortuus VIII 139 sqq., calendarium Rantzovianum VII 243, VIII 63, 412, 434, IX 211.
- Ratisbonæ* latitudo et longitudo V 309.
- Ravn*, Ericus, XIV 84.
- Rebenick*, Johannes, Pragensis, XIV 254 sq.
- Rechperger*, Guilielmus, XIV 282; epistola ejus ad heredes Tychonis XIV 287—289.
- Rectoratum* universitatis Hafniensis Tycho suscipere recusat VII 45—46, XIV 6.
- Reden*, Theodoricus, VIII 219.
- Refractio*, ab Alhazen investigata I xxviii, a Tychone I xxix, II 17, VI

- 39, 91 sqq., XI 131 sqq., 137, XII 313, origo ejus e vaporibus VI 136 sq., 166 sqq., aliter se habet in stellis fixis quam in Sole et Luna V 114, VI 92, refractionis et parallaxeos diversitas III 387, tabula refractionum solarium II 64, 76 sqq., investigatio II 78, VI 141, refractionis solaris a Copernico neglecta II 89, refractionis Lunæ II 136, stellarum fixarum II 286, III 130, 248 sq., 377, V 114, Hassiæ landgravius et Rothmannus de refractione VI 50, 53, 56 sq., 111 sq., 149 sqq.
- Regiomontanus*, Johannes, I vi, xvi, xxxii, VI 23, de astronomis conquestus est II 312, ratio ejus inquirendæ parallaxeos III 35, 176, 201 sq., IV 83, 124 sqq., 194 sqq., 210, 289, 434, 440, 448, 488, VII 64 sq., 179 sq., modus dirigendi VIII 217, de obliquitate Eclipticæ II 18, V 229, observationes Solis cum tabulis Tychonis comparatæ II 59, de Solis eccentricitate III 322, de Lunæ latitudine VII 153, de Lunæ distantia II 130sq., observationibus ejus Mercurii Copernicus usus est II 89, cometam anni 1472 observavit II 379, 457, III 26, 43, 140, IV 208, 213, 290, 351, 447, VI 65, 147, VII 68, 253, de caudis cometarum IV 136, 151, 328, 443, de stellarum catalogis III 341, de Romæ poli altitudine V 132, VII 297 sq., de armillis VII 19, ad calendarii emendationem vocatus V 179, observationes ejus rarissime sibi ipsis constantes V 179, VI 147, VII 258.
- Regiomonti* poli altitudo V 307 sq., 310, 312, VI 103, VIII 346, longitudo V 310, 312, VIII 345.
- Regulæ Ptolemaicæ* vid. *Parallaticum Instrumentum*.
- Regulæ parallaticæ* V 6, 100.
- Reinholdus*, Erasmus, I vii, III 123sq., 136, 145 sqq., IV 260, VI 103, VII 137, VIII 345 sq., 461.
- Reinholdus*, Erasmus, minor, de nova stella III 212—216.
- Reisacherus*, Bartholomæus, ejus scriptum de nova stella III 36, 45—48, 259—262, IV 470.
- Rentflerus*, Daniel, VII 114.
- Resen*, Johannes, IX 346, XIV 95.
- Resen*, Petrus Johannis, de Apologia ad Craigum IV 517.
- Resterhaviæ* poli altitudo XIII 113, 245, longitudo XIII 245.
- Reutter*, Hermannus, Hamburgensis, VIII 55.
- Reventlow*, Henning, Tychoni pecuniam solvere jubetur XIV 40, 44.
- Rheder*, Melchior, VIII 337, 358, 380, 461 sq.
- Rheticus*, Georgius Joachimus, VII 302, 333, VIII 200, 461; de veterum errore in eclipsibus observandis II 31, de effectibus eccentricitatis orbitæ Terræ mutatæ III 401, VI 160.
- Rhodium*, Ambrosius, VIII 293, 391, 462.
- Rhodi* latitudo et longitudo V 310.
- Richterus*, Petrus, XIV 45.
- Riccobonus*, Antonius, carmen de Tychone ad Maginum VI 7.
- Riddershusius*, Ludolphus, XIV 173, 196 sq.; epistola ejus ad Tychonem VIII 216—221, epistola Tychonis ad eum VIII 304—305, filii ejus VIII 221.
- Rindskat*, Sivertus, VIII 462; epistola Tychonis ad eum XIV 205—207.
- Ringelbergius*, Joachimus, VII 18, VIII 462.
- Riparum Cimbricarum* poli altitudo V 304, 309, longitudo V 309.
- Rix*, animal, VI 225 sq., 230 sqq., 234 sq., 238, 244, 248.
- Robertus*, Scotus, IX 347.
- Rochellæ* latitudo et longitudo V 310.
- Rodolphus* IX 347, XIII 345.
- Ræder* vid. *Rheder*.
- Ræmer*, Olaus, X vi sqq.
- Ræslin*, Helisæus, VII 383, VIII 462; systema Tychonicum se invenisse contendit I xlii, V 115, 323, VIII 206, de cometa anni 1577 IV 251—258, VII 50, epistola ejus ad Mæstlinum IV 254.

- Rogers*, Daniel, VI 358, VII 141, 217, 223, 284 sq., 378, VIII 462.
- Roias*, Johannes, de astrolabio V 99.
- Rolandus*, Joachimus, VII 193, 195, VIII 462.
- Rollenhagen*, Georgius, VI 179, VII 322, 324, 387 sqq., VIII 462; de systemate Tychonico VII 125 sq., 135 sq., epistolæ ejus ad Tychonem VIII 50—52, 72, 327, 416—417, 420—421, epistolæ Tychonis ad eum VIII 293—295, 369—372.
- Romæ poli altitudo* V 132, 310, VII 297 sq., longitudo V 310, VIII 345 sq.
- Romanus*, Adrianus, VIII 350, 386, 462.
- Rongel*, Johannes, IX 347.
- Rosa*, Andreas, VII 116 sqq.; de nova stella III 296—298.
- Rosæ*, cometarum genus, I 13, III 281
- Rosenberg* XIII 283.
- Rosenkrantz*, Fridericus, VIII 308 sq., 319, 330 sqq., 340, 368, 409, 446 sq., 462, IX 347, XIV 205 sq.
- Rosenkrantz*, Georgius, VIII 42, IX 347, XIV 40, 41, 49, 57, 61.
- Rosenkrantz*, Jacobus, VIII 74 sq., 462.
- Rosenkrantz*, Oligerus, VIII 462, IX 347, XIV 146 sq.; aderat Tychoni inter observandum XIII 126, epistolæ ejus ad Tychonem VII 375, VIII 15—17, 148—149, epistolæ Tychonis ad eum VII 374—375, VIII 3—4, 8—10, 10—12, 17—18, 22—24, 24—25, 59—68, 74—76, 77—79, 88—92, 109—110, 110—113, 113—114, 114—116, 125—126, 134—135, 154—156, 163—172, 330—335, 408—410, XIV 218, epistolam Tychonis ad Christianum IV regem correxit XIV 108—111.
- Rosensparre*, Elisabetha, IX 347, XIV 184.
- Rosensparre*, Olaus, VIII 111 sq., IX 347, XIV 82; epistola Tychonis ad eum XIV 184.
- Roskildense beneficium* Tychonis VIII 175 sq., XIV 3, 7—10, 11—12, 13, 24—25, 60, 66 sqq., 106, 120, 123, 129.
- Rostgaard*, Fridericus, X viii.
- Rostochii* latitudo et longitudo V 310.
- Rostochiensis consilii* acta de multa Tychoni irrogata XIV 4.
- Rotatio* stellis a Platone et Pythagoreis attributa II 456 sq.
- Rothius* VIII 420.
- Rothmannus*, Christophorus, Hassiæ landgravii mathematicus, VI 346, VII 323, VIII 182, 294 sq., 372, IX 347; scripta ejus astronomica et mathematica VI 118 sq., 161, Hvenam adiit VI 26 sq., 200, 218, 223, 227, de ætheris natura II 77, III 155, VII 238, de poli altitudinis alteratione III 197, de Lunæ latitudine VII 154, de latitudine stellarum fixarum mutata II 247, restitutio ejus stellarum fixarum VIII 347, de cometa anni 1585 IV 223, 350, 403, 468, 483, VI 54, 111, de systemate Tychonico VI 156 sqq., 215 sqq., de Wittichio queritur IV 454, a Craigo oppugnatur VI 332 sq., VII 335, Tychonis judicium de eo VI 245, 248, epistolæ ejus ad Tychonem II 39, III 204, IV 469, VI 54—58, 61—62, 110—119, 120—121, 149—161, 181—184, 201—202, 214—217, 314—315, ad Rantzovium VI 202, Tychonis epistolæ ad eum VI 85—104, 105—106, 132—133, 134—148, 166—181, 185—200, 203—204, 299—300, 315—337.
- Rothmannus*, Johannes, VI 299, VIII 30, 150, 295, 462, IX 347.
- Roydon*, Matthæus, VIII 21, 462.
- Rubertus*, Scotus, vid. Robertus.
- Rud*, Canutus, VIII 74, 462.
- Rud*, Johannes, IX 347.
- Rudingerus*, Bertholdus, IX 347.
- Rudolphus*, Groningensis, XIV 44.
- Rudolphus II*, imperator, I L, natiuitatis tempus III 382, Progymnasmatum librum ei dedicavit Tycho II 5, privilegium Tychoni ab eo concessum II 8—10, XIV 32—34, Stellarum inerrantium restitutionem Tycho ei dono dedit III 335, VIII 19, 166, Mechanica V 5 sqq., VIII 19, 166, 177, Solis et Lunæ motus restitutos V

- 165 sqq., VIII 166, 177, Tychonem recepit VIII 165, 177, 187, medicamento compositio a Tycho cum eo communicata IX 167—169, epistolæ ejus ad Matthiam archiducem VIII 446, XIV 255, ad senatum Hamburgensem XIV 151—152, ad Magdeburgenses XIV 163—164, ad collegium Bohemicum XIV 168, 217, ad præfectum ærarii XIV 193, 252, ad cameram Silesiacam XIV 232, 246—247, ad cameram Bohemicam XIV 266, Tychois epistolæ ad eum VIII 18—20, XIV 207—208.
- Rumphius*, curiæ magister, VIII 164 sq., 178, 381, 462 sq.
- Rungellius*, Johannes, IX 347.
- Rupecissa* VI 146.
- Ruzky*, Caspar, cubicularius, XIV 267, 278 sq.
- Sacrobustus* (Sacroboscus) VII 103, 367.
- Sager*, Johannes, medicus Lubecensis, VII 333, 343, 356, 358, VIII 463.
- Sagredus*, Johannes Franciscus, VIII 228, 250, 399, 463.
- Salfeldiæ* poli altitudo III 214.
- Sali*, Valerius, de cometa anni 1577 IV 510.
- Salzburgi* latitudo et longitudo V 309, 312.
- Samarobrivæ Ambianorum* latitudo et longitudo V 311.
- S. Andræ* latitudo et longitudo V 310.
- S. Johannis* latitudo et longitudo V 310.
- Sancti Quattuor*, cardinalis, VIII 251, 395, 461.
- Saravezza* de cometa anni 1577 IV 510.
- Sascerides* vid. David, Gellius.
- Saturnus* I LV, calculi ad elementa orbitæ corrigenda V 230—256, latitudo V 257—262, latitudo maxima VIII 196, parallaxis et distantia a Terra II 383, 389, 397, 426 sqq., 457, IV 155, vera magnitudo II 425, conjunctio cum Jove a. 1563 I 156, III 164, IV 404, 410, V 106 sq., prope Lunam observatus XI 142 sq., XIII 202, observationes X 3 sqq., 60 sq., 71 sq., 106, 171—173, 251—263, 314, 318—322, 382—387, 403—410, 413—415, XI 47—53, 165—172, 268—271, 326—328, XII 30—38, 127—133, 212—213, 272—275, 331—338, 419—428, XIII 25—32, 82—90, 105, 131—139, 164—172, 204—213, 259—265.
- Savellus*, Thomas, VIII 463; Tychois epistola ad eum VII 283—285.
- Scaliger*, Josephus, VII 372, VIII 94 sq., 463, XIV 173; liber ejus de emendatione temporum VII 82 sq., 86, 373, VIII 32, 84 sq., 101, observationes Tychois illi inseruit VIII 20, 85, de ævo mundi III 232, de Dionysiaca annorum numeratione VIII 236, 245, de præcessionem æquinocetiorum VIII 262 sq., epistolæ ejus ad Tychonem VIII 83—87, 261—264, epistolæ Tychois ad eum VIII 31—33, 100—109, 151—153, 187—190, 328—330.
- Scarlatina*, nomen aliquando insulæ Hvenæ datum IV 5, V 109, 323.
- Schack*, Johannes, artifex, VII 42.
- Schæ* poli altitudo V 342.
- Schele*, Eberartus, epistola ejus ad Tychonem VIII 421—422.
- Schiaparelli*, Johannes, de systemate Heraclidis I XLII.
- Schisler*, globi fabricator, VII 36, 46, VIII 463.
- Schleunitz*, Christophorus, VIII 371.
- Schæner* (Schoner), Andreas, V 53, VIII 463; Gnomonice II 40, 444.
- Schæner*, Johannes, VII 19, VIII 207, 463; observationes Mercurii II 89, V 323.
- Schœnfeldius*, Victorinus, VI 183, 198, 363; observationes tempestatis I xxxiii.
- Scholastici* I xxxvi.
- Schoner* vid. Schœner.
- Schotus*, Gabriel, VIII 79.
- Schotus*, Walter, VIII 79.
- Schougardius*, Johannes, secretarius, VII 26.

- Schreckenfuchsius**, Oswaldus, VII 15, 18 sq., 79, VIII 463; epistola ejus ad Wolfium VII 18.
- Schreining**, Johannes, XIV 124.
- Schröder**, Franciscus, VIII 222, 289, 416.
- Schrotten**, Johannes, IX 347.
- Schwalmius**, doctor, VIII 234, 236, 463.
- Schwarzenburg**, dux, VIII 334.
- Schulerus**, Wolfgang, stellam novam d. 6 Novembris primum conspexit II 453, responsio ejus ad Peucerum III 135—139, disquisitio observationum ejus III 143.
- Schulten**, Johannes, et filius ejus Franciscus VIII 220.
- Schumacher**, H. C., observationes Tychonis cometæ anni 1585 edidit X xi.
- Schyrmannus**, civis Hafniensis, VIII 23.
- Scintillatio fixarum** II 375 sqq., Aristoteles et Copernicus de causa ejus II 457, disputat Gemma ex scintillatione novæ stellæ cometam eam non fuisse III 86.
- Sciotericum horizontale** VII 124 sq., 385 sq.
- Scollius**, Andreas, IX 347.
- Scultetus**, Bartholomæus, VIII 463; amicus Tychonis IV 260, 296, Homelii discipulus IV 260, de subdivisione arcus per lineas transversas I xxiv, III 184, 212, V 107, librum edidit de cometa anni 1577 IV 296—337, 423, 425, 448 sqq., VII 59, 61 65 sq., 315, Tychoni scripsit de eodem IV 456 sq., Hagecium lacessivit VII 146, 255, epistolæ Tychonis ad eum VII 61—63, 123—124, 301—302, 327, VIII 234—236.
- Scylax** VIII 354.
- Sebastianus**, discipulus Tychonis, IX 347, XIV 45.
- Sebastianus**, rex Portugalix, VIII 407.
- Seefeld**, Eschillus, XIV 205.
- Seefeld**, Jacobus, VIII 214, XIV 49.
- Segurius**, Jacobus, legatus regis Navarrae, VII 98 sq., 102 sq., 105.
- Sehested**, Steno, IX 347, XIV 155 sq.
- Seiffart**, Matthias, VIII 299, 459.
- Seleucus** I vi.
- Selneccerus**, Nicolaus, de cometa anni 1577 IV 511.
- Semicirculus** I xix, amplus V 96 sq., VI 256, 275, alius VI 257, 276 sq., magnus azimuthalis V 40—43, VI 250, 262.
- Senæ** latitudo et longitudo V 312.
- Seneca**, systema mundi ejus I xxxvi, de natura cometarum II 435, 461, III 86, 228 sq., 266, VII 156, de cometa Attalo regnante viso VI 156, de cometa Neronis tempore viso III 135.
- Septimius**, Johannes, a Lichtenstein VII 166.
- Servetius**, Johannes Baptista, VIII 219.
- Severinus**, discipulus Tychonis, IX 347, XIV 44.
- Severinus Andreae** XIV 83.
- Seviliæ** latitudo et longitudo V 310, 312.
- Sextans a Curtio confectus** VII 357, 360.
- Sextantes** Tychonis I xxii, usus eorum ad stellarum loca determinanda II 247, 331 sqq., parallaxis eorum II 335, altitudo meridiana stellæ novæ per sextantem inventa II 339, Sextans astronomicus V 24—27, VI 260, 283, alius quo nova stella observabatur I xi sq., II 331 sqq., V 80—87, 318, VI 91, 251, 263, Sextans bifurcatus V 96, VI 253, 265, alius VI 36, 91, 250, 262 sq. (cf. Arcus bipartitus), Sextans chalybeus I xxii sq., IV 21, 369 sqq., V 76—79, 318, VI 36, 91, 253, 265, Sextans ligneus V 108, Sextans trigonicus I xxiii, II 248 sqq., V 72—75, 318, VI 37, 43, 91, 258, 279, VII 151.
- Sherley** (Shirley), Ammonius sive Robertus, V 325, VIII 398, 418, 449.
- Sibylla Tiburtina** et nova stella III 315 sqq.
- Sibyllina prophetia** III 80, 315 sqq.
- Sigismundus**, rex Sueciæ et Poloniæ,

- VIII 214, 289, 376, 403, 442, XIV 120, 169, 174.
- Sigismundus Augustus*, princeps Meckelburgensis, VI 64, VII 111, VIII 377, 380, 403 sq., XIV 115 sqq., 136.
- Sigismundus Batorus* VIII 415.
- Siletius*, Christophorus, IX 347.
- Simon a Quercu* de quadratura circuli VII 164.
- Simplex Solis* (locus medius), motus Lunæ et planetarum ad eum referuntur II 32, 443, III 322.
- Sivertslaviæ* latitudo et longitudo V 312.
- Sixtus ab Hemminga* contra astrologiam III 224.
- Skaaning*, Laurentius, XIV 89, 94.
- Skeel*, Christianus, IX 347, XIV 49, 57, 87.
- Skram*, Georgius, XIV 49.
- Skynens* VII 192, VIII 463.
- Skytt*, Christianus, XIV 56.
- Skytt*, Laurentius, IX 347.
- Slangendorf*, Johannes, IX 347.
- Slawata*, Gulielmus, VIII 97.
- Snellius*, Gillebrordus, VII 372, VIII 463, XIV 297.
- Snellius*, Rudolphus, VII 372 sqq., VIII 463.
- Socratis dictum* VII 246.
- Sol* præstat omnibus corporibus cælestibus II 13, V 166, 169 sqq., a Tycho observatus II 62 sq., Solis theoria I LI, II 13 sqq., V 110 sq., æquinoclia 1584—1588 II 15, apogæum et eccentricitas II 14, 19 sqq., 40 sqq., 442, III 322, IV 258, V 111, 199, 224, 331, VII 140, VIII 198 sq., 223 sq., 397, prosthaphæresis II 26—29, 49 sq., V 111, motus diurnus II 15, 36, 44, tabulæ motuum II 46 sqq., 91 sqq., cum observationibus comparatæ II 59—63, usus tabularum II 87 sqq., 96, cursum Solis exacte observari posse negat Cardanus II 57, 444, refractio II 17, 58, 64, 76 sqq., tripudium II 376, diameter apprensus II 420, tabula semidiametrorum Solis et Lunæ II 148, parallaxis I XXIX sq., XL, II 16, 58, 82 sqq., 383, IV 422, VIII 345, X 58, tabulæ parallaxium II 65, distantia a Terra secundum Copernicum II 421, secundum Offusium II 421, 460, secundum Tychonem II 82, 388, VI 364, VII 157, tabula distantiarum II 83, calculi de motu Solis V 217—227, vera magnitudo secundum Ptolemæum et Copernicum II 415 sq., IV 153, secundum Tychonem I 151, V 169, 327, effectus in res terrestres I 155, ephemerides Solis I LI, annorum 1572—73 II 53—56, annorum 1586—92 V 199—213, anni 1601 V 330, observationes X 130—138, 231—239, 289—299, 349—363, XI 1—19, 129—141, 244—254, 311—325, XII 1—15, 106—118, 184—188, 266—270, 311—315, 363—374, XIII 1—4, 78—79, 116—123, 160—162, 193—201, 253—259, altitudines meridianæ observatæ X 36—37, 40—42, 44, 55 sqq., 74 sq., 80 sq., 92 sq., 130—135, 231—236, 289—297, 345—348, 349—362, XI 1—14, 129—140, 244—254, 311—325, XII 1—8, 10—15, 106—113, 116—118, 184—188, 266—267, 269—270, 311—315, 363—368, 372—374, XIII 1—4, 78—79, 116, 122—123, 160—162, 193—195, 200—201, 253—259, eclipsis Solis a. 310 ante Chr. III 258, 403, a. 129 ante Chr. III 403, a. 1560 I IX, a. 1567 X 13, a. 1579 VII 51, X 75—76, a. 1582 X 134, a. 1584 X 299—302, a. 1587 XI 245—246, a. 1590 VI 365 sq., VII 275, 296, XII 8—10, a. 1591 IV 488, XII 113—115, a. 1593 XII 266—268, a. 1595 XII 368—372, a. 1598 V 182 sq., VIII 54 sq., 124, 251, 395, XIII 117—121, a. 1599 VIII 183, 210, 280, XIII 160, a. 1600 VIII 342 sq., 352, 385 sq., 395, XIII 196—200, a. 1601 II 144 sqq., III 321 sq., obscuratio Solis tempore crucifixionis Christi I 16, II 317, III 89, 97, 258, IV 396.
- Solimannus*, Turcarum imperator, I 135, X 13.
- Solis et Lunæ motus restituti* V 165 sqq.; Rudolpho imperatori donati VIII 166, 177.

- Solotii* latitudo et longitudo V 312.
Solstitia, eorum observationes II 18, 62.
Sommer, Jacobus, VIII 463; carmen manibus Friderici II inscriptum VIII 64.
Sommer, Laurentius, IX 347.
Sophia, regina Daniæ et Norvegiæ, VI 64, VII 111, IX 190, 347; epistolæ ejus ad Tychonem XIV 51—54, 62.
Sophocles de stellarum nominibus II 256.
Soræ poli altitudo XII 211.
Sosigenes calendarium Julianum instituit VIII 117, 438, IX 150.
Spagyrica ars I xi, II 307, III 307, V 108, 117 sq., VI 64, 118, 144 sqq., VII 42, 237 sq.
Spandaviæ latitudo et longitudo V 312.
Sparre, Ericus, vicecancellarius Sueciæ, VIII 59, 214, 283, XIV 169; epistola Tychonis ad eum XIV 119—120.
Sparre, Gabriel, VIII 215, XIV 119.
Sparthius, Joachimus, IX 347.
Spegel, Johannes, IX 347.
Sphæræ solidæ a Tychone rejectæ I xxxv; cf. *Orbes*.
Spica Virginis, latitudo II 212, 217 sqq., VI 94, longitudo ex data ejus latitudine et declinatione II 220 sqq., III 337, VI 73, 94, declinatio secundum Copernicum II 222, VI 72, VII 291, secundum Wernerum II 223.
Spiræ latitudo et longitudo V 309, 312.
Squarcialupus, Marcellus, de cometis IV 358 sq.
Stadius, Georgius, VII 57, VIII 463.
Stadius, Johannes, VIII 13, 229, 463.
Steenvigæ latitudo et longitudo V 312.
Steinmetz, Valentinus, de cometa anni 1577 IV 363 sq.
Stellæburgum I xvi sqq., descriptio V 146—149, VI 271 sqq., 292 sqq., reliquiæ V 326, latitudo et longitudo X xxvi.
Stellæ cadentes II 374, III 216, IV 135.
Stellæ fixæ semper in iisdem positionibus inter se manent II 235, VI 71, non a Sole illuminantur III 256, suo lumine lucent V 170, stellæ stellas non accendunt aut progignunt III 219, 267, latitudines earum propter variatam obliquitatem Eclipticæ mutantur II 234, III 336, 340, V 113, 170, VI 57, 71, 93, 115, 141, VII 114 sq., 295, VIII 39, quod ex observationibus Timocharis, Hipparchi, Ptolemæi demonstratur II 234 sqq., e propriis Tychonis III 340, non necessario æqualiter a Terra distant II 419, 432, magnitudinem earum et colorem variare e Ptolemæo probari nequit III 243 sq., magnitudines earum apparentes I xxxix, II 451, III 410, diametri XII 105, aberratio I xli, refractio II 286 sqq., III 377, veræ magnitudines II 429 sqq., stellæ antarcticæ V 114, stellarum præcipuarum ascensiones rectæ II 198 sqq., X 204—230, declinationes II 207, centum stellarum ascensiones rectæ et declinationes II 284—286, III 375—377, longitudes et latitudines II 206 sqq., IV 21—32, V 112 sqq., X 338—344, verificatio duodecim stellarum II 228 sqq., distantie II 430, 461, X 50—52, 67—72, 129, 190—195, 275—282, 330—338, XII 74—80, 82—85, 90—100, 103—105, 163—182, 226—228, 303—304, 361—362, 482—484, XIII 59—60, 98—100, 182—190, 236—241, 274—282, observationes X 107—129, 178—195, 264—282, 324—344, 416—427, XI 88—128, 206—243, 293—310, 340—382, XII 74—105, 162—183, 226—230, 303—304, 361—362, 482—486, XIII 59—60, 98—100, 182—190, 235—241, 273—282; cf. *Stellarum catalogi*, Stellarum inerrantium restitutio.
Stella magorum I xiv, 18, II 324, 374, III 69, 79, 99, 121, 125, 297, 395.
Stella nova anni 134 ante Chr. ab Hipparcho visa I 16, 310, II 321 sq., III 97, 107, tempore Hadriani conspecta II 328, 454, anni 389 III 57, 394, anni

- 398 III 51, 119, 394, annorum 945 et 1264 II 328, 454 sq., III 219 (fortasse cometæ), stella nova anni 1572 a Tycho observata I XII, 11, 16, 20 sqq., II 307 sqq., 455, III 97 sqq., V 116, X 38, liber Tychonis de ea I XVI, 3—72, 309, tempus primæ apparitionis II 452 sq., locus ejus ex distantia a stellis vicinis I 20 sqq., II 336, 353 sqq., III 100 sqq., 108, ex assumptis fixarum locis Coperniceis et Alphonsinis II 366 sqq., III 109, idem ab Argelandro inventus II 456, magnitudo, lumen, color I 28 sqq., II 308 sqq., 375, III 105 sqq., duratio II 308, omni parallaxi caruit I 24 sqq., II 382 sqq., 393 sqq., 401 sqq., 406 sqq., III 8 sqq., 103 sqq., 110, IV 470, in octava sphaera locum tenuit I 27, II 373 sqq., 382 sqq., IV 382 sqq., cometa non fuit II 374, vera magnitudo II 432 sqq., materia III 304 sqq., astrologicum iudicium de ea I 30 sqq., III 309 sqq., ab Hainzelio observata II 347 sqq., aliorum observationes et opiniones de ea III 5—299, qui parallaxeos expertem eam existimaverunt III 5—112, qui parallaxin aliqualem ei tribuerunt III 113—216, qui sublunarem eam habuerunt III 217—299, stella nova anni 1600 III 323.
- Stella polaris*, distantia ejus a polo II 348, 456, III 73 sqq., VI 39, VIII 103, 209, expugnata Constantinopoli delituisse dicitur III 257, VIII 189, parallaxis annua nulla inventa VIII 209, locum non mutare existimat Scaliger VIII 263.
- Stellarum catalogi* Hipparchi III 335, Ptolemæi I XLIII, II 151, III 255, 335 sqq., 411, VIII 151 sq., Alphonsi III 337, Ulugh Beg I XLIV, Copernici II 156, 281, III 337, Hassiæ landgravii II 156, 282 sq., III 131, 342, stellarum loca ex observationibus landgravii VI 77, ex observationibus Tychonis VI 78—83, catalogus Tychonis a. 1589 confectus XI 383—412, ad a. 1588 completum XII 231—265, ad a. 1595 completum XIII 61—77, catalogus stellarum 777 ad annum 1600 completum II 258—280, catalogus mille stellarum sive Stellarum inerrantium restitutio III 331—377.
- Stellarum inerrantium restitutio* III 331—377, quomodo composita I XLIV sqq., II 159 sqq., 197 sqq., 226 sq., III 339 sqq., 408 sqq., V 112, appendix catalogi III 379—389, quam bene cum rerum veritate congruat III 408 sqq., quæ in ea corrigenda sunt III 412 sqq., Rantzovio missa VIII 64, 66, Scaligero VIII 106, Ferdinando duci VIII 119, Magino VIII 123, Rudolpho imperatori donata VIII 166, 177, 347, Christiano electori Saxoniae missa VIII 313, 316, Christiano IV regi XIV 134; cf. Stellarum catalogi.
- Stella variabilis Cygni* III 323, 407.
- Stenwinckel*, Johannes, architectus V 31, 321.
- Stephanus* VII 11.
- Stettini* latitudo et longitudo V 310.
- Stewart* (Stuart), Guilelmus IV 515, VI 318, 374, VII 175, 195, VIII 463.
- Stocchelmannus*, Johannes, IX 347.
- Stockholmiae* latitudo et longitudo V 309.
- Stœfflerinus*, Johannes, de astrolabio V 99.
- Stoici*, opiniones eorum de astrologia I XIV, de mundo I XXXVI, de Deo III 89, de magnitudine Solis, Lunæ ceterorumque astrorum IV 152.
- Stopius*, Abraham, VIII 379, 389.
- Stralendorff*, Joachimus, XIV 229, 231.
- Stuart* vid. Stewart.
- Stub*, Ivarus, XIV 105.
- Sturcius*, Christophorus, VIII 59, 130, 464; epistolæ ejus ad Tychonem VIII 375—376, 403, epistolæ Tychonis ad eum VIII 288—289, 360—361, 390, 415—416.
- Sture*, gens nobilis Sueca, VII 300.
- Sturmius*, Johannes, VII 41, VIII 463 sq.

- Stutgardii* latitudo et longitudo V 312.
- Stygge*, Johannes, VIII 90, 99, 127, 464; epistola ejus ad Aalburgensem XIV 142—145.
- Swalbius*, Bartholomæus, VIII 269, 321, 464.
- Subdivisio instrumentorum* per lineas transversas, a Levi ben Gerson inventa I xxiv, a Curtio et Clavio V 121 sqq., 324, a Sculteto cum Tycho communicata III 184, mentionem facit Johannes Dee III 398 sq., a Tycho usurpata IV 372, V 25, 153 sqq., 320, VI 35 sq., 90 sq., 284, VII 261.
- Suckerback*, Nicolaus, VIII 328.
- Suinderin*, Casparus, IX 347.
- Swinfordiæ* latitudo et longitudo V 312.
- Swuntonius*, Marcus, VII 192.
- Sylvisburgi* poli altitudo V 304, 309, longitudo V 309.
- Syndel*, doctor Bohemus, V 228, XIII 161.
- Syracusarum* latitudo et longitudo V 312.
- Systema Coperniceum* I vii, xxxvi, II 14, III 175, 203, IV 156, 388, 446, 473, V 176 sq., VI 70, 102, 197, 215, VII 24, 39 sq., 80, 128 sqq., 293 sqq., 370, VIII 355 sqq.
- Systema Ptolemaicum* I v, xxxvi, IV 156, 473, VI 70, VII 24, 128 sqq.
- Systema Tychonicum* I xli sqq., III 175, IV 250, 446, 473 sqq., V 115, 120, 126, VI 133, 147, 176 sqq., 196, 218 sqq., 336, VII 121, 125 sqq., 142, 145, 148 sq., 166 sq., 180, 199 sqq., 293 sqq., 322, VIII 37 sqq., 45, 311, 352, XIV 237; exponitur IV 155—170, quando excogitatum IV 502 sq., 512, VI 179, VII 24, 130, 199, vindicaverunt sibi Ursus, Liddelius, Roeslin V 115, 323, Rothmanni iudicium de eo VI 156 sqq., 215 sqq.
- Tabulæ Alphonsinæ* I vi, II 6, III 131, 221, VIII 413, Prutenicæ I vii, Rudolphinæ I xlvi, XIV 292 sqq.
- Tabulæ* a Tycho confectæ, declinationis Eclipticæ II 66 sqq., ascensionum rectorum ad singulos gradus Eclipticæ II 72 sqq., tabulæ solares II 46 sqq., 91 sqq., refractionum solarium II 64, parallaxium solarium II 65, distantiae Solis a Terra II 83, æquationis temporis II 97, 102, tabulæ lunares II 103 sqq., 124 sqq., 140 sq., refractionum lunarium II 136, parallaxium lunarium II 132 sqq., latitudinis planetarum V 257 sqq., 334, oppositionum Martis V 289, tabula præcessionis II 257, 280, III 343, 374, refractionum stellarum II 286, III 377.
- Tampach*, Gotefridus, bibliopola, II 441, IV 493, VI 345, XIV 294.
- Taubmannus*, Fridericus, poeta, VIII 64, 248 sq., 267 sq., 464; epistola Tychoonis ad eum VIII 365.
- Tauchmannus*, Johannes, XIV 173; epistola Tychoonis ad eum XIV 191.
- Tempestatis* prædictiones I xiii, observationes I xxxiii; vid. Mutationes aeris.
- Temporis* determinatio I xxi, xxv.
- Tengnagel*, Franciscus Gansneb, VII 372, VIII 78, 464; in Bataviam missus VIII 32, 84, 95 sqq., 100, Coloniæ missus VIII 65, 80 sqq., 95 sq., libros Tychoonis secum tulit VIII 67, in Italiam missus VIII 118, 123, 130, 190, 226, 243, 310, Pragæ missus VIII 245 sq., in Germaniam profectus est VIII 275, commendatur a Tycho VIII 259 sqq., carmen ejus V 93—95, epistolæ ejus ad Tycho-nem VIII 80—83, 272, Elisabetham filiam Tychoonis duxit VIII 409, 413, XIV 218, 221, 251, 262, præfationem scripsit in librum de mundi ætherei recentioribus phænomenis IV 494 sq., contractum fecit cum Keplero de edendis Tabulis Rudolphinis XIV 256 sq., 268.
- Terræ* ambitus II 382 sq., 457.
- Tetrabiblos* Ptolemæi I xv.
- Teuffel*, Johannes Christophorus, consiliarius cameræ aulicæ, XIV 259.

- Theatrum astronomicum* a Tycho-
nimo conceptum I xxxiii, II 439,
VII 132, 292, VIII 199.
- Thebitius*, Choræ filius, de anno si-
dereo II 34, 444, VIII 86, 103.
- Theodoricus* IX 347.
- Theodoricus*, rex, VIII 417.
- Theodorus* IX 347.
- Theophilus*, Nicolaus, professor Haf-
niensis, VI 313, 374, XIV 77.
- Tholchæ* latitudo et longitudo V 312.
- Thomas Aquinas* I xiv, VI 146.
- Thoruni* latitudo et longitudo V 310,
312.
- Thott*, Otto, IX 347.
- Thott*, Tago, IX 202 sq., 347, XIV 157
sq., 178, 205; epistola ejus ad Ty-
chonem XIV 170—171, epistola Ty-
chonis ad eum XIV 171—172.
- Thurneysser*, Leonhardus, VII 57,
VIII 51, 464, stellam novam mense
Octobri in Hispania visam esse di-
cit II 452, III 403, d. 8 Novembris
primum visam esse dicit II 453, co-
metam anni 1577 d. 15 Octobris se
vidisse ait IV 498.
- Timochares*, I 149, V 5; stellis fixis
operam dedit II 150 sq., loca stella-
rum secundum eum II 236 sq., 246,
254, III 335, VI 94 sq., 115 sq.
- Toleti* latitudo et longitudo V 310,
312.
- Torgæ* latitudo et longitudo V 312.
- Tornilla* IX 347.
- Torquetum* I xix, II 153, V 6, 53, VI
155, 175, VII 62, 406.
- Transversales*, vid. Subdivisio instru-
mentorum.
- Transylvaniæ Baioda* (Waiuoda) VIII
276, 284, 405, 407, 414.
- Trapezuntius*, Georgius, VII 37, 356,
VIII 464; commentaria in Ptolemæ-
um VII 95, 103, 105, 112, 194, 215,
251, 270, 357, 370.
- Trautsonius*, aulæ mareschallus, VIII
178, 381, 464.
- Tremellius*, Immanuel, VIII 235.
- Trepidatio æquinociorum*, historia
ejus I xlvi, a Tycho accepta,
postea rejecta I xlvii, II 33, 35, 255,
443, VI 353, VIII 103, 198, 437, sen-
tentia Scaligeri de ea VIII 86, 103.
- Treschkow*, Georgius, epistola ejus
ad Andream Meyerum XIV 117—
118.
- Treutler*, Hieronymus, VI 28, VIII
323; 464; cf. Turler.
- Triangula sphaerica et plana*, proble-
mata Jøestellii, I 297—305, 318 sqq.
- Triangulorum praxis arithmetica*
I xxxii, 283—293, 315—318.
- Trigoni* I 31, 310, III 311 sqq.
- Triquetrum* I xx.
- Troldenirer*, Johannes, præfectus
arci Bernburgicæ, VI 160.
- Trolle*, Bøerge, IX 347.
- Tubanellus*, Olivarius, carmen ejus
de Tycho VI 8.
- Tubingæ* latitudo et longitudo V 309,
312.
- Tupman*, G. L., de accuratione ob-
servationum Solis I xxvii.
- Turcæ* VIII 276, 284, 288, 368, 391, 409,
414.
- Turici* latitudo et longitudo V 309,
313.
- Turler*, Hieronymus, VI 13; cf. Treut-
ler.
- Turneisserus* vid. Thurneysser.
- Tussannus* IX 347.
- Typotius* VIII 212, 233, 276 sq., XIV
240.
- Tyronis* latitudo et longitudo V 312.
- Tzernemel* VIII 343.
- Wakenitz*, Stellan, VII 119.
- Waldkirch*, Henricus, IX 347.
- Valentiæ* poli altitudo III 82, V 312,
longitudo V 312.
- Valentinus* IX 347.
- Valentinus*, scriba arcis Witebergen-
sis, VII 81.
- Walkendorf*, Christophorus, præfec-
tus ærarii, postea aulæ magister,
VIII 230, XIV 40, 41, 49, 102; Ty-
choni ex ærario pecuniam solvere
jubetur XIV 5—6, 20—21, 23, 34, 40,
43, navem ei procurare jubetur XIV
25, epistola Tychonis ad eum XIV
139.

- Walkendorf*, Ericus, XIV 55, 57.
- Valla*, Georgius, edidit Procli Hypotyposes VII 85, VIII 464.
- Vallesius*, Franciscus, VIII 464; liber ejus de nova stella III 87—92, novam non fuisse contendit III 87, VII 134, nullam parallaxin ei attribuit III 87, de cæli natura VI 166, VII 133 sq., 190, de iis quæ physice in sacris litteris continentur VI 185, 363 sq.
- Valrot*, Christophorus, IX 347.
- Walter*, Michael, scriba Erici Lange, VIII 210.
- Walther*, Bernhardus I xvi, xviii, xliv, li, VIII 465; horologiis usus est I xxi, refractionem Solis animadvertit I xxix, IV 42, X 358, Venere usus est ad longitudes stellarum inveniendas I xlii, II 449, de obliquitate Eclipticæ II 18, V 229, de latitudine Noribergæ II 38, observationes Solis cum tabulis Tychonis comparatæ II 60 sq., observationes Mercurii II 89, V 110, 323, aliæ ejus observationes II 29, 38 sq., IV 258, VII 286.
- Vandal*, Johannes, IX 347.
- Wandesburgi* poli altitudo VIII 54, longitudo VIII 125.
- Varsoviæ* latitudo et longitudo V 310.
- Wartenberg* (Wartenberg), Carolus, VIII 320, XIV 202 sq.
- Udalricus*, vid. Huldaricus, Ulricus.
- Wechelus*, bibliopola et typographus VII 38.
- Vehaiæ* poli altitudo V 304, 309, longitudo V 309.
- Weimari* latitudo et longitudo V 312.
- Vellejus* (Vedel), Andreas, I xlvi, V 106 sq., 322 sq., VI 359, VIII 464, IX 347; elegia ejus de nova stella I 71, tabulas geographicas conficere instituit V 342, Augustam profectus est VII 53, epistolæ Tychonis ad eum VII 3—5, 54—55, 56—57, 77, 97—98, 219, 275—276, VIII 25—27, 48—50, 131—133, 175—181, carmen ei scriptum IX 174.
- Welserus*, Andreas, VII 20, 84.
- Welserus*, Marcus, VIII 264, 465.
- Venetiaë* poli altitudo V 310, 312, VII 298, longitudo V 310, 312, VIII 125.
- Venus*, apogæum ejus et eccentricitas VI 336, VIII 209, 432, parallaxis insensibilis I xxx sq., XII 52, 60, distantia a Terra IV 387 sq., VI 70, interdum solito major visa III 258 sq., vera magnitudo II 424 sq., loca stellarum intermediente Venere verificata a Walthero II 449, a Tychone II 159 sq., 170, 178, V 112 sq., VI 69 sq., 122, 128 sq., 162, X 204—230, eclipsis ficta per Mercurium VIII 157 sq., 172, 189, 195, 351 sq., observationes X 3 sq., 45 sq., 76 sq., 86 sq., 104 sq., 152—171, 260, 314—318, 322—323, 382, 387, 391—395, 398—415, XI 67—76, 188—203, 277—292, 336—338, XII 46—72, 152—156, 222—224, 299—302, 348—361, 460—475, XIII 48—55, 95, 145—149, 227—234, 270—273.
- Werner*, Johannes, VIII 465; usus est annotationibus de tempestate I xiii, xxxiii, de obliquitate Eclipticæ II 18, de prosthaphæresi I xxxii, 316 sq., stellarum loca per Spicam determinavit II 156, 223—226, 449, de motu octavæ spheræ V 126, VII 83, 95, 104, 295, VIII 200 sq., de elementis conicis VII 147, 213, 220, 222, 245, observationes VIII 207, 225.
- Vernerius* (Vernier) I xxiv, V 324.
- Veronæ* latitudo et longitudo V 310, 312.
- Vesalii* Anatomia VIII 35, 63.
- Wesellii* latitudo et longitudo V 312.
- Uggerup*, Arrild, XIV 14, 15, 17.
- Via lactea* vid. Galaxia.
- Wibe*, Michael, XIV 188; epistola ejus ad Tychonem XIV 170.
- Viburgi Cimbrici* poli altitudo V 304, 309, 313, longitudo V 309, 313.
- Vicker*, David, XIV 150.
- Viennæ* poli altitudo III 28, 31, 47, 394, V 309, 312, longitudo V 309, 312.
- Vieta*, Franciscus, VIII 305, 350, 386, 464.
- Viffert*, Corfitz, XIV 49.

- Vigenere*, Bl., de cometa anni 1577 IV 511.
- Wilhelmus* vid. Guilelmus.
- Wilihelmus* IX 347; vid. etiam Guilelmus.
- Willerus*, bibliopola, VII 83.
- Willoughby*, comes, VII 75, 406.
- Winckler*, Nicolaus, Reinholdi discipulus, IV 260, VIII 465, de cometa anni 1577 IV 213, 348—355, 374, 430, 462, 511, de cometa anni 1580 VII 204, 246 sq., Hagecii iudicium de eo VII 145, 246 sq., Curtii iudicium de eo VII 203.
- Vindobona* vid. Vienna.
- Winshemius*, Vitus, VII 220 sqq., 245, 283, 357, VIII 63, 76, 91, 115, 293, 465, XIV 146 sq.; epistolæ ejus ad Tychonem VIII 31, 339—340, epistolæ Tychonis ad eum VIII 35, 147—148, 303, 367—368.
- Vinstrup*, Petrus, episcopus, IX 347, XIV 77, 104 sq.
- Virdungus*, Johannes, VIII 302.
- Wirtzburgi* latitudo et longitudo V 313.
- Wismarii* latitudo et longitudo V 313.
- Witebergæ* poli altitudo III 51, 53, 123, 136, 144 sqq., V 309, 313, XIII 160, 162, longitudo V 309, 313.
- Witebergensis* decanus et doctores, epistola Tychonis ad eos VIII 382.
- Vitellio* de stellarum scintillatione II 375 sq., VI 121, de vaporum altitudine IV 326; vid. etiam Alhazen.
- Vitruvius* VII 29.
- Wittichius*, Paulus, VIII 34, 266, 465, Uraniburgi commoratus est IV 453, VII 58, prosthaphæresin invenit I xxxii, 315, VI 354, VII 58, VIII 201, cometam anni 1580 observavit IV 422, VII 160, XIII 315 sq., eclipsin Lunæ anni 1584 VI 57, 100, 116, 141 sq., Uraniburgum reliquit VII 175, Cassellas venit et landgravium docuit de inventis Tychonis III 6, 129, 393, IV 374, 453, V 25, 79, 155, VI 12, 31 sq., 36, 49, 52, 55 sqq., 89 sq., 189, 328, VII 108 sq., 261, 281, 323, 360, VIII 201, de parallaxibus speculatus est III 35, 177, IV 448 sqq., VII 207, a Tychone vituperatur IV 454 sqq., VII 62 sq., laudatur VI 327, VII 58, mortuus VI 356.
- Vitus* VII 88, 91 sq.
- Vladislaviæ* latitudo et longitudo V 310.
- Ulfeld*, Fridericus, IX 347.
- Ulfeld*, Jacobus, VIII 17 sq., 61, IX 322; carmen Tychonis ad eum IX 179—180.
- Ulfstand*, Hack, XIV 49, 57.
- Ulfstand*, Tale, XIV 79.
- Ulisippo* vid. Lisbona.
- Ulmæ* latitudo et longitudo V 312.
- Ulricus*, dux Meckelburgensis, VI 64, VII 106, 111, 116, VIII 9, 36, 110, 176, 338, 377, 413, IX 347; epistolæ ejus ad Tychonem XIV 41, 113, 227—228, ad Christianum IV regem XIV 113—114, ad Rudolphum imperatorem XIV 145—146, ad Eschillum Bille XIV 225, ad Meyerum XIV 231—232, ad Sophiam reginam XIV 242, epistolæ Tychonis ad eum XIV 111—112, 147—148, 218—219, 221, 223—224, 226—227.
- Ulricus* junior, dux Meckelburgensis, XIV 115 sq., 136.
- Ulugh Beg* I xvi, xxiii, xliv.
- Vogelinus* de cometa anni 1532 III 26, 43, 140, 393, 397, IV 208, 322, 351, 447, VI 65, 147, VII 68, 212, 258, VIII 464 sq.
- Voitus*, Albertus, carmen in effigiem Tychonis VI 5.
- Wolffenbittelæ* latitudo et longitudo V 313.
- Wolfius*, Hieronymus, II 346, VII 19, 35, VIII 465; epistolæ Peuceri et Hainzelii ad eum de nova stella III 48 sqq., epistolæ ejus ad Tychonem VII 5—7, 15—18, 47—48, 51—52, 57—58, de astrologia VII 16 sq., epistola Tychonis ad eum VII 52—53.
- Wolframsdorf*, Georgius, epistola Tychonis ad eum VIII 317—318.
- Wolmerstadii* latitudo et longitudo V 313.

- Worm, Johannes*, IX 347.
Wormatiæ latitudo et longitudo V 309, 313.
Vossius a Vossenburg, Gisbertus, XIV 282, epistola ejus ad heredes Tychonis XIV 287—289.
Upsaliæ latitudo et longitudo V 309.
Uraniburgum, descriptio ejus I xvi, lvii, V 138—145, VI 288 sqq., 349, constructum V 109, VII 31, 59, inscriptiones V 143, 148, VI 266—276, 365, 368 sq., IX 175, poli altitudo I xxviii, II 16, 25, 220, IV 34, 108, V 150, 309, 312, VI 68, 80, VII 67, 75, 139, VIII 54, X xxii, xxvi, 52, 138, 297 sq., 382, longitudo II 15, IV 519, V 150, 312, VI 165, VII 179, VIII 125, X xxii, xxvi.
Vratislaviæ poli altitudo V 309, 311, longitudo IV 519, V 309, 311.
Urint, Nicolaus, XIV 79.
Urne, Cecilia, XIV 186.
Urne, Lago, IX 347, XIV 79.
Ursinus, Adamus, de nova stella III 294—296, de cometis III 397.
Ursus, Raimarus, VIII 464; Hvenæ versatus est VI 61 sq., 179 sq., postea Cassellis degens systema Tychoncum se invenisse contendit I xlii, V 121, 323, VI 179 sq., 183, 351 sq., VII 135, 149, 167, 200 sq., 281, 321 sqq., 387 sqq., VIII 24, 34, 47, 150, 203 sqq., 352 sqq., etiam Wittichii formulas I 315 sq., VI 361, VII 281, VIII 201, Fundamentum ejus astronomicum VI 351 sq., a Rothmanno vituperatur VI 61 sq., 361 sqq., Pragam venit VII 305, mathematicus imperatoris factus est VIII 50, 72 sq., 136, liber ejus de astronomicis hypothesibus VI 352, VIII 34, 56 sqq., 61, 94, 126, 180 sqq., 204 sq., 210, 213, 292, 334, 344, XIV 209, 238, a Keplero laudatur VIII 46 sq., vituperatur VIII 141 sqq., de Tychone conquestus est VIII 281, 298 sq., a Tychone in jus vocatus VIII 343, mortuus VIII 343, 371, 447 sq.
Urup, Christiernus, VII 54.
Young vid. Junius.
Ystadiæ poli altitudo V 304, 309, longitudo V 309.
Zehentner, Paulus, VIII 386.
Zeitzi latitudo et longitudo V 313.
Zerotinus, Carolus, VIII 268.
Zervestæ latitudo et longitudo V 309, 313.
Ziriczææ latitudo et longitudo V 313.
Zygidis latitudo et longitudo V 313.

ADDENDA ET CORRIGENDA

AD TOMOS I—XIV.

In tomo IX afferuntur, quæ ad tomos I—IX addenda et corrigenda sunt. Quæ in tomis X, XIII, XIV minus recte expressa sint, iisdem in tomis indicatur. Hic pauca adduntur, quæ postea inventa sunt.

Tom. I.

Ad p. LV v. 24 pro *Decembri* leg. *Septembri*.

Tom. III.

Ad p. 6 v. 20 pro *Stellæ* leg. *Stella*.

Ad p. 341 v. 21 pro *Cœlistis* leg. *Cœlestis*.

Ad p. 410 v. 14 pro *perfectam* leg. *perfectum*.

Tom. IV.

Ad p. 86 v. 33 pro *moto* leg. *motu*.

Tom. V.

Ad p. 71 v. 2 pro 145 leg. 345.

Ad p. 107 v. 5 pro *quemodmodum* leg. *quemadmodum*.

Tom. VI.

Ad p. 336 v. 1 cf. Hor. Sat. II 1, 77 sq. (item ad tom. VII p. 340 v. 31).

Tom. VIII.

Ad p. 457 Ioannem Baptistam Hainzelium septemvirum, Paulum (non Petrum) fratrem consulem fuisse dicendum fuit.

Tom. IX.

Ad p. 82 col. 2 v. 40 pro *obiijt* leg. *abijt*.

Ad p. 209 v. 5: Qui Hvenam missi sunt, fuerunt Thomas Fincke et Ivarus Stub professores (vid. tom. XIV p. 105).

Tom. XIII.

Ad p. 283 v. 2 pro *moram* leg. *morem*.

Tom. XIV.

Ad p. 316 v. 22 pro *par* leg. *per*.

QUÆ QUINTO DECIMO TOMO CONTINENTUR.

	Pag.
Carminum Appendix.....	1-6
Index Hominum et Rerum.....	7-51
Addenda et corrigenda ad tomos I-XIV.....	52



TYPIS DESCRIPSERUNT NIELSEN & LYDICHE
(AXEL SIMMELKIÆR)
CHARTAM PRÆBUERUNT OFFICINÆ CHARTARIÆ
CONSOCIATÆ (DE FORENEDE PAPIRFABRIKKER)
QUÆ LUCIS OPE EXPRIMENDA ERANT
EXPRESSIT F. HENDRIKSEN
NUMERUS EXEMPLORUM VENALIUM: 225

QUINTUS DECIMUS TOMUS PRELUM RELIQUIT
D. 1. M. NOVEMBRIS
ANNO
MCMXXIX

